

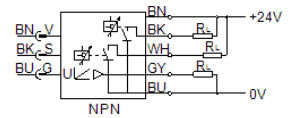
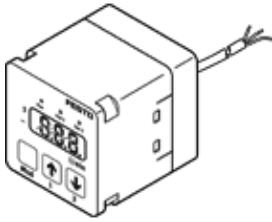
# flow sensor

## SFEV-F005-L-2NB-K1

Part number: 538545

FESTO

Separate display for SFET-F and SFET-R flow rate transducers



## Data sheet

| Feature                                 | Value  |
|---|--|
| Authorisation                           | RCM Mark   |
| CE mark (see declaration of conformity) | to EU directive for EMC                          |
| Materials note                          | Contains PWIS substances                         |
| Ambient temperature                     | 0 ... 50 °C                                      |
| Switch output                           | 2xNPN  |
| Switching function                      | Window comparator<br>Threshold value comparator  |
| Switching element function              | Normally closed contact<br>Normally open contact |
| Analogue output                         | 1 - 5 V  |
| Load resistance                         | 50 kOhm  |
| Indicating range                        | 0.05 ... 0.5 l/min                               |
| Operating voltage range DC              | 12 ... 24 V                                      |
| Electrical connection                   | Cable  |
| Cable length                            | 1 m  |
| Materials information, cable sheaths    | PVC  |
| Mounting type                           | With mounting bracket                            |
| Product weight                          | 70 g   |
| Materials information, housing          | PA   |
| Type of display                         | 31-place alphanumeric                            |
| Protection class                        | IP40   |
| Corrosion resistance classification CRC | 2 - Moderate corrosion stress                    |