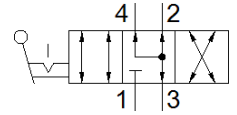
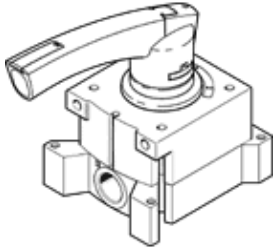


hand lever valve VHER-BH-M04E-G14-LD

Part number: 538202

FESTO

In plastic version with position sensing of the hand lever setting, 4/3-way valve function normally exhausted, lockable in 3 lever settings, outgoing direction to the side.



Data sheet

Feature	Value
Valve function	4/3 exhausted
Type of actuation	manual
Standard nominal flow rate	1,150 l/min
Operating pressure	-0.95 ... 10 bar
Design structure	Rotary slide valve
Nominal size	8 mm
Exhaust-air function	throttleable
Actuator lock	with accessories, lockable
Sealing principle	Hard
Type of piloting	direct
Flow direction	reversible
Freedom from overlap	Yes
Signal status display	with accessories
Operating medium	Compressed air in accordance with ISO8573-1:2010 [7:4:4]
Note on operating and pilot medium	Lubricated operation possible (subsequently required for further operation)
Corrosion resistance classification CRC	2
Ambient temperature	-20 ... 80 °C
Actuation torque	2.8 Nm
Product weight	435 g
Mounting type	Optional Front panel installation with through hole
Pneumatic connection, port 1	G1/4
Pneumatic connection, port 2	G1/4
Pneumatic connection, port 3	G1/4
Pneumatic connection, port 4	G1/4
Materials note	Free of copper and PTFE Contains PWIS substances
Materials information for seals	NBR
Materials information, housing	Aluminium die cast