

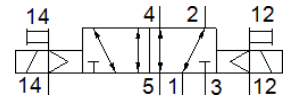
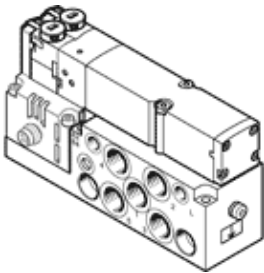
solenoid valve

VMPA2-M1H-J-S-G1/8-PI

Part number: 537973

FESTO

For valve terminal MPA-S.



Data sheet

Feature	Value
Valve function	5/2 bistable
Type of actuation	electrical
Valve size	20 mm
Standard nominal flow rate	700 l/min
Operating pressure MPa	-0.09 ... 1 MPa
Operating pressure	-0.9 ... 10 bar
Design structure	Piston slide
Authorisation	c UL us - Recognized (OL)
CE mark (see declaration of conformity)	to EU directive for EMC in accordance with EU RoHS directive
UKCA marking (see declaration of conformity)	To UK instructions for EMC To UK RoHS instructions
Protection class	IP65 in assembled condition to IEC 60529
Exhaust-air function	throttleable
Sealing principle	soft
Assembly position	Any
Manual override	detenting Pushing
Type of piloting	Piloted
Pilot air supply	external
Flow direction	reversible
Overlap	Positive overlap
Signal status display	Yes
Pilot pressure MPa	0.3 ... 0.8 MPa
Pilot pressure	3 ... 8 bar
Suitability for vacuum	Yes
Standard nominal flow rate with QS-8	670 l/min
Switching time on	9 ms
Switching time reversal	22 ms
Max. positive test pulse with logic 0	400 µs
Max. negative test pulse with logic 1	900 µs
Permissible voltage fluctuation	+/- 25 %
Operating medium	Compressed air in accordance with ISO8573-1:2010 [7:4:4]
Note on operating and pilot medium	Lubricated operation possible (subsequently required for further operation)
Vibration resistance	Transport application test at severity level 2 in accordance with FN 942017-4 and EN 60068-2-6
Shock resistance	Shock test with severity level 2 in accordance with FN 942017-5 and EN 60068-2-27
Corrosion resistance classification CRC	1 - Low corrosion stress
PWIS conformity	VDMA24364-B1/B2-L
Storage temperature	-20 ... 40 °C

Feature	Value
Medium temperature	-5 ... 50 °C
Relative air humidity	Max. 90% at 40°C
Ambient temperature	-5 ... 50 °C
Max. tightening torque, valve mounting	0.65 Nm
Product weight	325 g
Electrical connection	4-pin M8x1 Plug to EN 60947-5-2
Mounting type	with through hole
Auxiliary pilot air port 12/14	M5
Pilot exhaust port 82/84	M5
Pneumatic connection, port 1	G1/8
Pneumatic connection, port 2	G1/8
Pneumatic connection, port 3	G1/8
Pneumatic connection, port 4	G1/8
Pneumatic connection, port 5	G1/8
Materials note	Conforms to RoHS
Material seals	NBR
Material housing	Aluminium die cast