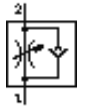
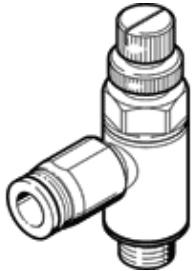


One-way flow control valve GRLA-1/8-QS-8-RS-MF-D

Part number: 537073

FESTO

With knurled screw and lock nut, high flow rate



Data sheet

Feature	Value
Valve function	One-way flow control function
Pneumatic connection, port 1	QS-8
Pneumatic connection, port 2	G1/8
Adjusting element	Knurled screw
Mounting type	Threaded with external (male) thread
Standard nominal flow rate in flow control direction	475 l/min
Standard nominal flow rate in non-return direction	325 ... 500 l/min
Operating pressure	0.2 ... 10 bar
Ambient temperature	-10 ... 60 °C
Operating medium	Dried compressed air, lubricated or unlubricated
Authorisation	Germanischer Lloyd
Assembly position	Any
Standard flow rate in direction of flow control: 6 -> 0 bar	720 l/min
Standard flow rate in blocked direction: 6 -> 0 bar	610 ... 760 l/min
Storage temperature	-10 ... 40 °C
Medium temperature	-10 ... 60 °C
Max. tightening torque	5 Nm
Product weight	40 g
Materials note	Free of copper and PTFE
Materials information for seals	NBR
Material information, hollow bolt	Wrought Aluminium alloy Anodised
Release ring material data	POM
Material information, knurled head	Wrought Aluminium alloy Anodised
Regulating screw material data	High alloy steel, non-corrosive
Swivel joint material data	Zinc die-casting