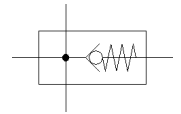
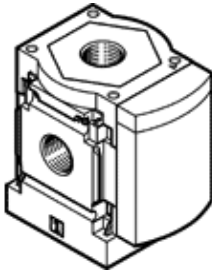


branching module MS6N-FRM-1/2-I-Z

Part number: 536984

FESTO

With integrated non-return function, direction of flow: from right to left



Data sheet

| Feature | Value |
|--|---|
| Assembly position | Any |
| Design structure | Branching module With non-return function |
| Operating pressure | 0 ... 20 bar |
| Standard nominal flow rate in main flow direction 1->2 | 6,000 l/min |
| Standard nominal flow rate outlet at top | 3,100 l/min |
| Standard nominal flow rate outlet at bottom | 3,300 l/min |
| Operating voltage range AC | 0 ... 250 V |
| Operating voltage range DC | 0 ... 125 V |
| Operating medium | Compressed air in accordance with ISO8573-1:2010 [7:4:4] Inert gases |
| Note on operating and pilot medium | Lubricated operation possible (subsequently required for further operation) |
| Corrosion resistance classification CRC | 2 - Moderate corrosion stress |
| PWIS conformity | VDMA24364-B1/B2-L |
| Storage temperature | -10 ... 60 °C |
| Food-safe | See Supplementary material information |
| Medium temperature | -10 ... 60 °C |
| Ambient temperature | -10 ... 60 °C |
| Product weight | 400 g |
| Pneumatic connection, port 1 | 1/2 NPT |
| Pneumatic connection, port 2 | 1/2 NPT |
| Pneumatic connection, port 3 | 1/2 NPT |
| Pneumatic connection, port 4 | 1/2 NPT |
| Materials note | Conforms to RoHS |
| Material housing | Aluminium die cast |