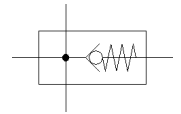


# branching module MS6N-FRM-1/4-I-Z

Part number: 536982

FESTO

With integrated non-return function, direction of flow: from right to left



## Data sheet

Feature	Value
Assembly position	Any
Design structure	Branching module With non-return function
Operating pressure	0 ... 20 bar
Standard nominal flow rate in main flow direction 1->2	3,200 l/min
Standard nominal flow rate outlet at top	2,700 l/min
Standard nominal flow rate outlet at bottom	2,800 l/min
Operating voltage range AC	0 ... 250 V
Operating voltage range DC	0 ... 125 V
Operating medium	Compressed air in accordance with ISO8573-1:2010 [7:4:4] Inert gases
Note on operating and pilot medium	Lubricated operation possible (subsequently required for further operation)
Corrosion resistance classification CRC	2 - Moderate corrosion stress
PWIS conformity	VDMA24364-B1/B2-L
Storage temperature	-10 ... 60 °C
Food-safe	See Supplementary material information
Medium temperature	-10 ... 60 °C
Ambient temperature	-10 ... 60 °C
Product weight	400 g
Pneumatic connection, port 1	1/4 NPT
Pneumatic connection, port 2	1/4 NPT
Pneumatic connection, port 3	1/2 NPT
Pneumatic connection, port 4	1/2 NPT
Materials note	Conforms to RoHS
Material housing	Aluminium die cast