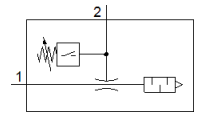
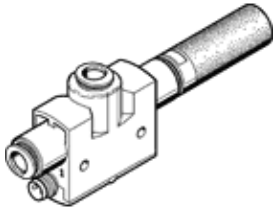


vacuum generator VN-07-H-T4-PQ2-VQ2-01-P

Part number: 536800

FESTO

With integrated vacuum switch. Standard, high vacuum, width 18 mm, T shape with plug connector and open silencer.



Data sheet

| Feature | Value |
|--|---|
| Nominal size, Laval nozzle | 0.7 mm |
| Grid dimension | 16 mm |
| Design, silencer | open |
| Assembly position | Any |
| Ejector characteristic | High vacuum Standard |
| Integrated function | Pressure sensor Open silencer |
| Design structure | T-shaped |
| Short circuit strength | Pulsing |
| Measured variable | Relative pressure |
| Measuring principle | Piezoresistive |
| Measurement method | Relative |
| Switching element function | Normally open contact |
| Switching function | Threshold value comparator Threshold value with fixed hysteresis |
| Polarity protected | for all electrical connections |
| Type of display | LED |
| Threshold value setting range | -100 ... 0 kPa |
| Setting options | Teach-In |
| Operating status display | LED |
| Threshold setting range | -1 ... 0 bar |
| Threshold value setting range | -14.5 ... 0 psi |
| Operating pressure for max. suction rate (MPa) | 0.3 MPa |
| Operating pressure for max. suction rate | 3 bar |
| Operating pressure for max. suction rate (psi) | 43.5 psi |
| Operating pressure MPa | 0.1 ... 0.8 MPa |
| Operating pressure | 1 ... 8 bar 14.5 ... 116 psi |
| Operating pressure for max. vacuum (MPa) | 0.44 MPa |
| Operating pressure for max. vacuum | 4.4 bar |
| Operating pressure for max. vacuum (psi) | 63.8 psi |
| Max. vacuum | 92 % |
| Nominal operating pressure | 0.6 MPa 6 bar |
| Nominal operating pressure (psi) | 87 psi |
| Max. suction rate with respect to atmosphere | 16.2 l/min |
| Switch-off time | ≤ 4 ms |
| Switch-on time | ≤ 4 ms |
| Operating voltage range DC | 15 ... 30 V |
| Inductive protective circuit | Adapted to MZ-, MY-, ME coils |
| Max. output current | 100 mA |
| Residual current | ≤ 0.3 mA |

| Feature | Value |
|--|--|
| Residual ripple | 10 % |
| Switch output | PNP |
| Voltage drop | ≤ 1.5 V |
| Overload withstand capability | Available |
| Authorisation | RCM Mark |
| KC mark | KC-EMV |
| CE mark (see declaration of conformity) | to EU directive for EMC |
| UKCA marking (see declaration of conformity) | To UK instructions for EMC |
| Operating medium | Compressed air in accordance with ISO8573-1:2010 [7:4:4] |
| Note on operating and pilot medium | Lubricated operation not possible |
| Corrosion resistance classification CRC | 1 - Low corrosion stress |
| PWIS conformity | VDMA24364-B1/B2-L |
| Medium temperature | 0 ... 60 °C |
| Recommendation for cleaning | Soap suds |
| Noise level at nominal operating pressure | 66 dB(A) |
| Protection class | IP40 |
| Ambient temperature | 0 ... 50 °C |
| Max. tightening torque | 0.6 Nm |
| Pressure measurement range | -100 ... 0 kPa |
| Pressure measuring range | -1 ... 0 bar |
| Pressure measurement range | -14.5 ... 0 psi |
| Product weight | 36 g |
| Accuracy, FS | 1.5 %FS |
| Hysteresis FS | 2 %FS |
| Long term drift | ±0.5% FS max. |
| Temperature coefficient, switching point | 0.05 %/K |
| Electrical connection | 3-pin M8 |
| Mounting type | with through hole |
| Pneumatic connection, port 1 | QS-6 |
| Pneumatic connection, port 3 | Open silencer |
| Vacuum connection | QS-6 |
| Material seals | NBR |
| Material receiver nozzle | POM |
| Material housing | POM-reinforced |
| Material fibre-optic | PC |
| Material silencer | PE |
| Material connector housing | Brass PA Chromium and nickel plated |
| Material transmitter nozzle | Wrought Aluminium alloy |
| Material keypad | POM |
| Material fitting | Brass Nickel plated |