

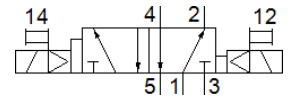
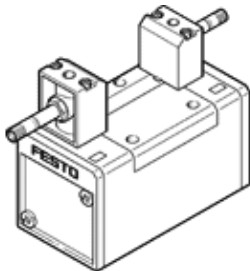
# solenoid valve

## JMFDH-5/2-D-2-C-EX

Part number: 536072

FESTO

With manual override.



## Data sheet

Feature	Value
Valve function	5/2 bistable-dominant
Type of actuation	electrical
Width	54 mm
Standard nominal flow rate	2,300 l/min
Operating pressure MPa	0.2 ... 1 MPa
Operating pressure	2 ... 10 bar
Design structure	Piston slide
CE mark (see declaration of conformity)	to EU directive explosion protection (ATEX)
UKCA marking (see declaration of conformity)	To UK EX instructions
ATEX category Gas	II 2G
ATEX category Dust	II 2D
Explosion ignition protection type Gas	Ex h IIC T4 Gb
Explosion ignition protection type Dust	Ex h IIIC T105°C Db
Explosion-proof ambient temperature	-5°C ≤ Ta ≤ +40°C
Explosion protection certification outside the EU	EPL Db (GB) EPL Gb (GB)
Protection class	IP65
Nominal size	11.5 mm
Grid dimension	56 mm
Exhaust-air function	throttleable
Sealing principle	soft
Assembly position	Any
Conforms to standard	ISO 5599-1
Manual override	with accessories, detenting Pushing
ISO code	269
Type of piloting	Piloted
Pilot air supply	Internal
Flow direction	non reversible
Overlap	Positive overlap
Switching time reversal	18 ms
Switching time reversal (dominating)	18 ms
Max. positive test pulse with logic 0	2,200 μs
Max. negative test pulse with logic 1	3,700 μs
Operating medium	Compressed air in accordance with ISO8573-1:2010 [7:4:4]
Note on operating and pilot medium	Lubricated operation possible (subsequently required for further operation)
Vibration resistance	Transport application test with severity level 1 as per FN 942017-4 and EN 60068-2-6
Shock resistance	Shock test with severity level 2 in accordance with FN 942017-5 and EN 60068-2-27
PWIS conformity	VDMA24364-B1/B2-L
Medium temperature	-10 ... 60 °C
Sound pressure level	85 dB(A)

<b>Feature</b>	<b>Value</b>
Ambient temperature	-5 ... 40 °C
Product weight	820 g
Electrical connection	Via F coil, must be ordered separately
Mounting type	On sub-base With through-hole and screw
Pilot exhaust port 82	M5
Pilot exhaust port 84	M5
Pneumatic connection, port 1	Connection plate size 2 as per ISO 5599-1
Pneumatic connection, port 2	Connection plate size 2 as per ISO 5599-1
Pneumatic connection, port 3	Connection plate size 2 as per ISO 5599-1
Pneumatic connection, port 4	Connection plate size 2 as per ISO 5599-1
Pneumatic connection, port 5	Connection plate size 2 as per ISO 5599-1
Materials note	Conforms to RoHS
Material seals	HNBR NBR
Material housing	Aluminium die cast