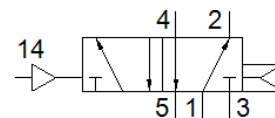
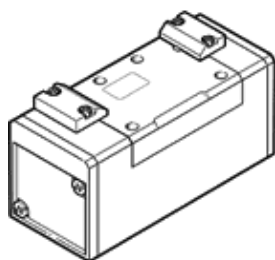


# pneumatic valve VL-5/2-D-1-C-EX

Part number: 536007

FESTO

5/2-way function, pneumatically actuated, with spring return



## Data sheet

Feature	Value
Valve function	5/2 monostable
Type of actuation	pneumatic
Width	42 mm
Standard nominal flow rate	1,200 l/min
Operating pressure	2 ... 16 bar
Design structure	Piston slide
Type of reset	Air spring
CE mark (see declaration of conformity)	to EU directive explosion protection (ATEX)
UKCA marking (see declaration of conformity)	To UK EX instructions
ATEX category Gas	II 2G
ATEX category Dust	II 2D
Explosion ignition protection type Gas	Ex h IIC T4 Gb
Explosion ignition protection type Dust	Ex h IIIC T130°C Db
Explosion-proof ambient temperature	-10°C ≤ Ta ≤ +60°C
Explosion protection certification outside the EU	EPL Db (GB) EPL Gb (GB)
Nominal size	8 mm
Grid dimension	43 mm
Exhaust-air function	throttleable
Sealing principle	soft
Assembly position	Any
Conforms to standard	ISO 5599-1
Manual override	None
ISO code	102
Type of piloting	direct
Flow direction	non reversible
Overlap	Positive overlap
Pilot pressure	2 ... 16 bar
Switching time off	18 ms
Switching time on	9 ms
Operating medium	Compressed air in accordance with ISO8573-1:2010 [7:4:4]
Note on operating and pilot medium	Lubricated operation possible (subsequently required for further operation)
Vibration resistance	Transport application test with severity level 1 as per FN 942017-4 and EN 60068-2-6
Shock resistance	Shock test with severity level 2 in accordance with FN 942017-5 and EN 60068-2-27
PWIS conformity	VDMA24364-B1/B2-L
Medium temperature	-10 ... 60 °C
Sound pressure level	85 dB(A)
Pilot medium	Compressed air in accordance with ISO8573-1:2010 [7:4:4]
Ambient temperature	-10 ... 60 °C
Product weight	290 g
Mounting type	On sub-base

Feature	Value
	with through hole
Pilot air port 12	Connection plate size 1 as per ISO 5599-1
Pilot air port 14	Connection plate size 1 as per ISO 5599-1
Pneumatic connection, port 1	Connection plate size 1 as per ISO 5599-1
Pneumatic connection, port 2	Connection plate size 1 as per ISO 5599-1
Pneumatic connection, port 3	Connection plate size 1 as per ISO 5599-1
Pneumatic connection, port 4	Connection plate size 1 as per ISO 5599-1
Pneumatic connection, port 5	Connection plate size 1 as per ISO 5599-1
Materials note	Conforms to RoHS
Material seals	HNBR NBR
Material housing	Aluminium die cast