

# solenoid valve

## MFH-5/3B-3/8-B-EX

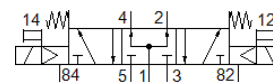
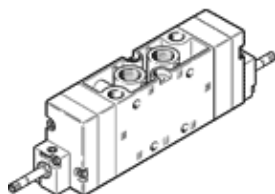
Part number: 535950

Classic - do not use for new projects

FESTO

With manual override, without solenoid coil or socket. Solenoid coil and socket should be ordered separately.

Modern alternatives can be found by entering the first four characters of the type code in the search field.



## Data sheet

| Feature   | Value   |
|---|---|
| Valve function                                    | 5/3 pressurised   |
| Type of actuation                                 | electrical  |
| Width   | 40 mm   |
| Standard nominal flow rate                        | 2,600 l/min   |
| Operating pressure MPa                            | 0.3 ... 1 MPa   |
| Operating pressure                                | 3 ... 10 bar  |
| Design structure                                  | Piston slide  |
| Type of reset                                     | mechanical spring   |
| CE mark (see declaration of conformity)           | to EU directive explosion protection (ATEX)                                 |
| Explosion protection certification outside the EU | EPL Db (GB)<br>EPL Gb (GB)  |
| UKCA marking (see declaration of conformity)      | To UK EX instructions   |
| ATEX category Gas                                 | II 2G   |
| ATEX category Dust                                | II 2D   |
| Explosion ignition protection type Gas            | Ex h IIC T4 Gb  |
| Explosion ignition protection type Dust           | Ex h IIIC T130°C Db   |
| Explosion-proof ambient temperature               | -5°C ≤ Ta ≤ +40°C   |
| Protection class                                  | IP65  |
| Nominal size                                      | 12 mm   |
| Grid dimension                                    | 41 mm   |
| Exhaust-air function                              | throttleable  |
| Sealing principle                                 | soft  |
| Assembly position                                 | Any   |
| Manual override                                   | Pushing   |
| Type of piloting                                  | Piloted   |
| Pilot air supply                                  | Internal  |
| Flow direction                                    | non reversible  |
| Overlap   | Positive overlap  |
| Max. switching frequency                          | 3 Hz  |
| Switching time off                                | 118 ms  |
| Switching time on                                 | 25 ms   |
| Switching time reversal                           | 78 ms   |
| Max. positive test pulse with logic 0             | 2,200 µs  |
| Max. negative test pulse with logic 1             | 3,700 µs  |
| Operating medium                                  | Compressed air in accordance with ISO8573-1:2010 [7:4:4]                    |
| Note on operating and pilot medium                | Lubricated operation possible (subsequently required for further operation) |
| Corrosion resistance classification CRC           | 1 - Low corrosion stress  |
| PWIS conformity                                   | VDMA24364-B1/B2-L   |
| Storage temperature                               | -40 ... 60 °C   |
| Medium temperature                                | -5 ... 40 °C  |

| Feature                      | Value                                  |
|------------------------------|--|
| Ambient temperature          | -5 ... 40 °C                           |
| Product weight               | 780 g                                  |
| Electrical connection        | Via F coil, must be ordered separately |
| Mounting type                | with through hole                      |
| Pilot exhaust port 82        | M5                                     |
| Pilot exhaust port 84        | M5                                     |
| Pneumatic connection, port 1 | G3/8                                   |
| Pneumatic connection, port 2 | G3/8                                   |
| Pneumatic connection, port 3 | G3/8                                   |
| Pneumatic connection, port 4 | G3/8                                   |
| Pneumatic connection, port 5 | G3/8                                   |
| Materials note               | Conforms to RoHS                       |
| Material seals               | NBR                                    |
| Material housing             | Aluminium die cast                     |