

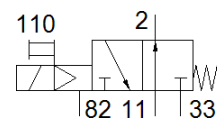
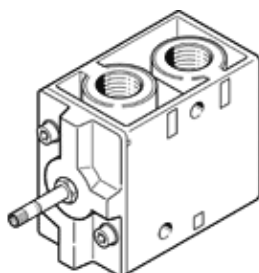
# solenoid valve

## MOFH-3-1/2-EX

Part number: 535905

FESTO

With manual override, without solenoid coil or socket. Solenoid coil and socket should be ordered separately.



## Data sheet

Feature	Value
Valve function	3/2 open, monostable
Type of actuation	electrical
Width	52 mm
Standard nominal flow rate	3,700 l/min
Operating pressure MPa	0.15 ... 0.8 MPa
Operating pressure	1.5 ... 8 bar
Design structure	Poppet seat
Type of reset	mechanical spring
CE mark (see declaration of conformity)	to EU directive explosion protection (ATEX)
Explosion protection certification outside the EU	EPL Db (GB) EPL Gb (GB)
UKCA marking (see declaration of conformity)	To UK EX instructions
ATEX category Gas	II 2G
ATEX category Dust	II 2D
Explosion ignition protection type Gas	Ex h IIC T4 Gb
Explosion ignition protection type Dust	Ex h IIIC T130°C Db
Explosion-proof ambient temperature	-5 °C ≤ Ta ≤ +40 °C
Protection class	IP65
Nominal size	14 mm
Grid dimension	69 mm
Exhaust-air function	throttleable
Sealing principle	soft
Assembly position	Any
Manual override	detenting
Type of piloting	Piloted
Flow direction	non reversible
Overlap	Underlap
b value	0.3
Switching time off	90 ms
Switching time on	18 ms
Max. positive test pulse with logic 0	2,200 μs
Max. negative test pulse with logic 1	3,700 μs
Characteristic coil data	See solenoid coil, to be ordered separately
Operating medium	Compressed air in accordance with ISO8573-1:2010 [7:4:4]
Note on operating and pilot medium	Lubricated operation possible (subsequently required for further operation)
Corrosion resistance classification CRC	1 - Low corrosion stress
PWIS conformity	VDMA24364-B1/B2-L
Storage temperature	-20 ... 60 °C
Medium temperature	-5 ... 40 °C
Ambient temperature	-5 ... 40 °C
Product weight	1,100 g
Electrical connection	Via F coil, must be ordered separately

Feature	Value
Mounting type	on manifold rail with through hole Optional
Scavenging orifice connection	M5
Pilot exhaust port 82	M5
Pneumatic connection, port 1	G1/2
Pneumatic connection, 11	G1/2
Pneumatic connection, port 2	G1/2
Pneumatic connection, port 3	G1/2
Pneumatic connection, 33	G1/2
Materials note	Conforms to RoHS
Material seals	NBR
Material housing	Aluminium die cast