

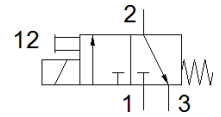
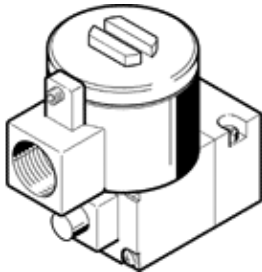
# pilot valve

## MGXDH-3/2-1.2-24DC-EX

Part number: 535615

FESTO

with CNOMO port pattern, to ISO 15218  
This type is suitable for vacuum.



## Data sheet

Feature	Value
Valve function	3/2 closed, monostable
Type of actuation	electrical
Operating pressure MPa	-0.09 ... 0.8 MPa
Operating pressure	-0.9 ... 8 bar -13.05 ... 116 psi
Design structure	On/off valve
Type of reset	mechanical spring
CE mark (see declaration of conformity)	to EU directive explosion protection (ATEX)
Explosion protection certification outside the EU	EPL Db (CN) EPL Db (IEC-EX) EPL Gb (CN) EPL Gb (IEC-EX)
Certificate issuing department	ATEX: CML 15 ATEX 1119X CCC-Ex: 2020322307001701 IEC: IECEx CML 17.0147X
ATEX category Gas	II 2G
ATEX category Dust	II 2D
Explosion ignition protection type Gas	ATEX: Ex db IIC T5 Gb CCC-Ex: Ex d IIC T3/T6 Gb
Explosion ignition protection type Dust	Ex tb IIIC T100°C Db
Explosion-proof ambient temperature	ATEX: -65°C ≤ Ta ≤ +55°C CCC-Ex: -20°C ≤ Ta ≤ +40°C
Protection class	IP66
Manual override	detenting
Flow direction	non reversible
Duty cycle	100 %
Insulation class	H
Characteristic coil data	24 V DC: 3 W
Permissible frequency fluctuation	+/- 10 %
Operating medium	Compressed air in accordance with ISO8573-1:2010 [7:4:4]
Note on operating and pilot medium	Lubricated operation possible (subsequently required for further operation)
Corrosion resistance classification CRC	2 - Moderate corrosion stress
PWIS conformity	VDMA24364 zone III
Ambient temperature	-20 ... 80 °C
Mounting type	CNOMO
Materials note	Conforms to RoHS