

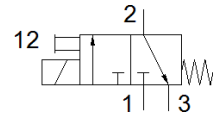
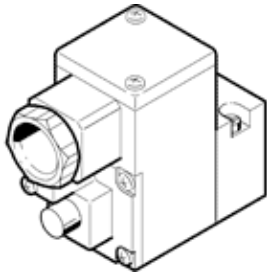
pilot valve

MGXIAH-3/2-0.8-24DC-EX

Part number: 535614

FESTO

with CNOMO port pattern, to ISO 15218
This type is suitable for vacuum.



Data sheet

Feature	Value
Valve function	3/2 closed, monostable
Type of actuation	electrical
Operating pressure MPa	-0.09 ... 0.8 MPa
Operating pressure	-0.9 ... 8 bar -13.05 ... 116 psi
Design structure	On/off valve
Type of reset	mechanical spring
CE mark (see declaration of conformity)	to EU directive explosion protection (ATEX)
Explosion protection certification outside the EU	EPL Da (CN) EPL Da (IEC-EX) EPL Ga (CN) EPL Ga (IEC-EX)
Certificate issuing department	ATEX: CML 17 ATEX 2046X CCC-Ex: 2020322307001726 IEC: IECEx CML 17.0030X
ATEX category Gas	II 1G
ATEX category Dust	II 1D
Explosion ignition protection type Gas	Ex ia IIC T6...T5 Gb
Explosion ignition protection type Dust	Ex ia IIIC T135°C Db
Explosion-proof ambient temperature	-40°C ≤ Ta ≤ 50°C/65°C
Protection class	IP65
Manual override	detenting
Flow direction	non reversible
Duty cycle	100 %
Insulation class	H
Max. input power	-40°C ~+50°C T6 = 2,98W -40°C ~+65°C T135°C = 2,98W -40°C ~+65°C T5 = 2,98W -40°C ~+65°C T6 = 1W
Max. input voltage	31 V
Max. input current	0,67 A
Characteristic coil data	24 V DC: 1.5 W
effective inductivity	negligibly small
effective capacity	negligibly small
Permissible frequency fluctuation	+/- 10 %
Operating medium	Compressed air in accordance with ISO8573-1:2010 [7:4:4]
Note on operating and pilot medium	Lubricated operation possible (subsequently required for further operation)
Corrosion resistance classification CRC	2 - Moderate corrosion stress
PWIS conformity	VDMA24364 zone III
Ambient temperature	-20 ... 80 °C
Mounting type	CNOMO
Materials note	Conforms to RoHS