

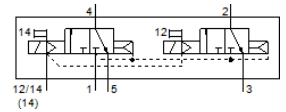
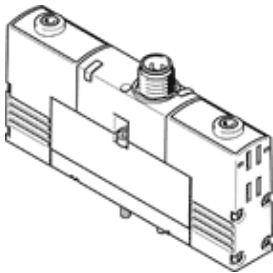
# solenoid valve

## VSVA-B-T32C-AZH-A2-1R2L

Part number: 534781

FESTO

with central plug, round design M8x1.



## Data sheet

| Feature                                   | Value  |
|---|--|
| Valve function                            | 2x3/2 closed, monostable   |
| Type of actuation                         | electrical   |
| Width                                     | 18 mm  |
| Standard nominal flow rate                | 400 l/min  |
| Operating pressure MPa                    | 0.3 ... 1 MPa  |
| Operating pressure                        | 3 ... 10 bar   |
| Design structure                          | Piston slide   |
| Type of reset                             | Air spring   |
| Authorisation                             | C-Tick<br>c UL us - Recognized (OL)  |
| CE mark (see declaration of conformity)   | to EU directive for EMC  |
| Protection class                          | IP65   |
| Nominal size                              | 5 mm   |
| Exhaust-air function                      | throttleable   |
| Sealing principle                         | soft   |
| Assembly position                         | Any  |
| Conforms to standard                      | ISO 15407-1<br>VDMA 24563  |
| Manual override                           | Pushing  |
| Type of piloting                          | Piloted  |
| Pilot air supply                          | external   |
| Flow direction                            | non reversible   |
| Overlap                                   | Positive overlap   |
| Polarity protected                        | for all electrical connections   |
| Additional functions                      | Reduction of holding current<br>Safety shut-off  |
| Signal status display                     | LED  |
| Pilot pressure MPa                        | 0.3 ... 0.8 MPa  |
| Pilot pressure                            | 3 ... 8 bar  |
| Flow rate of valve                        | 600 l/min  |
| Flow rate of valve on individual sub-base | 450 l/min  |
| Flow rate of pneumatically linked valve   | 400 l/min  |
| Switching time off                        | 22 ms  |
| Switching time on                         | 10 ms  |
| Operating voltage range DC                | 21.6 ... 26.4 V  |
| Duty cycle                                | 100 %  |
| Max. positive test pulse with logic 0     | 500 µs   |
| Max. negative test pulse with logic 1     | 500 µs   |
| Characteristic coil data                  | 24 V DC: low-current phase 1 W, high-current phase 2.4 W                                       |
| Operating medium                          | Compressed air in accordance with ISO8573-1:2010 [7:4:4]                                       |
| Note on operating and pilot medium        | Lubricated operation possible (subsequently required for further operation)                    |
| Vibration resistance                      | Transport application test at severity level 2 in accordance with FN 942017-4 and EN 60068-2-6 |

| Feature  | Value   |
|--|---|
| Shock resistance                               | Shock test with severity level 2 in accordance with FN 942017-5 and EN 60068-2-27 |
| Corrosion resistance classification CRC        | 2 - Moderate corrosion stress   |
| PWIS conformity                                | VDMA24364-B1/B2-L   |
| Medium temperature                             | -5 ... 50 °C  |
| Relative air humidity                          | 0 - 90 %  |
| Protection against direct and indirect contact | Protective extra-low voltage with safe disconnection (PELV)                       |
| Ambient temperature                            | -5 ... 50 °C  |
| Max. tightening torque, valve mounting         | 0.9 ... 1.1 Nm  |
| Product weight                                 | 140 g   |
| Electrical connection                          | 4-pin<br>M8x1<br>Central plug<br>Round design                                     |
| Mounting type                                  | On sub-base   |
| Materials note                                 | Conforms to RoHS  |