

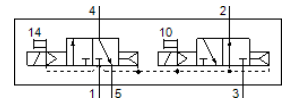
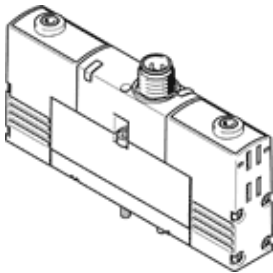
solenoid valve

VSVA-B-T32H-AH-A2-1R2L

Part number: 534773

FESTO

with central plug, round design M8x1.



Data sheet

| Feature | Value |
|--|--|
| Valve function | 2x3/2 open/closed, monostable |
| Type of actuation | electrical |
| Width | 18 mm |
| Standard nominal flow rate | 400 l/min |
| Operating pressure MPa | 0.3 ... 0.8 MPa |
| Operating pressure | 3 ... 8 bar |
| Design structure | Piston slide |
| Type of reset | Air spring |
| Authorisation | C-Tick c UL us - Recognized (OL) |
| CE mark (see declaration of conformity) | to EU directive for EMC |
| UKCA marking (see declaration of conformity) | To UK instructions for EMC To UK RoHS instructions |
| Protection class | IP65 |
| Nominal size | 5 mm |
| Exhaust-air function | throttleable |
| Sealing principle | soft |
| Assembly position | Any |
| Conforms to standard | ISO 15407-1 VDMA 24563 |
| Manual override | Pushing |
| Type of piloting | Piloted |
| Pilot air supply | Internal |
| Flow direction | non reversible |
| Overlap | Positive overlap |
| Polarity protected | for all electrical connections |
| Additional functions | Reduction of holding current Safety shut-off |
| Signal status display | LED |
| Flow rate of valve | 600 l/min |
| Flow rate of valve on individual sub-base | 450 l/min |
| Flow rate of pneumatically linked valve | 400 l/min |
| Switching time off | 22 ms |
| Switching time on | 10 ms |
| Operating voltage range DC | 21.6 ... 26.4 V |
| Duty cycle | 100 % |
| Max. positive test pulse with logic 0 | 500 µs |
| Max. negative test pulse with logic 1 | 500 µs |
| Characteristic coil data | 24 V DC: low-current phase 1 W, high-current phase 2.4 W |
| Operating medium | Compressed air in accordance with ISO8573-1:2010 [7:4:4] |
| Note on operating and pilot medium | Lubricated operation possible (subsequently required for further operation) |
| Vibration resistance | Transport application test at severity level 2 in accordance with FN 942017-4 and EN 60068-2-6 |

| Feature | Value |
|--|---|
| Shock resistance | Shock test with severity level 2 in accordance with FN 942017-5 and EN 60068-2-27 |
| Corrosion resistance classification CRC | 2 - Moderate corrosion stress |
| PWIS conformity | VDMA24364-B1/B2-L |
| Medium temperature | -5 ... 50 °C |
| Relative air humidity | 0 - 90 % |
| Protection against direct and indirect contact | Protective extra-low voltage with safe disconnection (PELV) |
| Ambient temperature | -5 ... 50 °C |
| Max. tightening torque, valve mounting | 0.9 ... 1.1 Nm |
| Product weight | 140 g |
| Electrical connection | 4-pin M8x1 Central plug Round design |
| Mounting type | On sub-base |
| Materials note | Conforms to RoHS |