

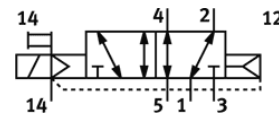
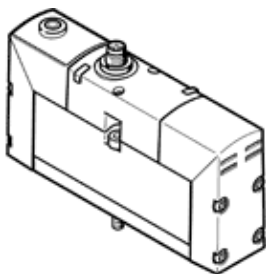
solenoid valve

VSVA-B-M52-AZH-A1-1R5L

Part number: 534545

FESTO

with central plug, round design M12x1.



Data sheet

| Feature | Value |
|--|---|
| Valve function | 5/2 monostable |
| Type of actuation | electrical |
| Width | 26 mm |
| Standard nominal flow rate | 1,100 l/min |
| Operating pressure MPa | -0.09 ... 1.6 MPa |
| Operating pressure | -0.9 ... 16 bar |
| Design structure | Piston slide |
| Type of reset | Air spring |
| Authorisation | RCM Mark c UL us - Recognized (OL) |
| CE mark (see declaration of conformity) | to EU directive for EMC |
| UKCA marking (see declaration of conformity) | To UK instructions for EMC To UK RoHS instructions |
| Protection class | IP65 NEMA 4 |
| Nominal size | 9 mm |
| Grid dimension | 27 mm |
| Exhaust-air function | throttleable Via throttle plate Via individual sub-base |
| Sealing principle | soft |
| Assembly position | Any |
| Conforms to standard | ISO 15407-1 |
| Manual override | Pushing |
| Type of piloting | Piloted |
| Pilot air supply | external |
| Flow direction | Any |
| Overlap | Positive overlap |
| Polarity protected | for all electrical connections |
| Additional functions | Reduction of holding current Safety shut-off |
| Signal status display | LED |
| Pilot pressure MPa | 0.3 ... 0.8 MPa |
| Pilot pressure | 3 ... 8 bar |
| b value | 0.25 |
| C value | 4.5 l/sbar |
| Flow rate of valve | 1,400 l/min |
| Flow rate of valve on individual sub-base | 1,100 l/min |
| Flow rate of pneumatically linked valve | 1,100 l/min |
| Switching time off | 40 ms |
| Switching time on | 25 ms |
| Duty cycle | 100 % |
| Max. positive test pulse with logic 0 | 400 µs |
| Max. negative test pulse with logic 1 | 100 µs |

| Feature | Value |
|--|--|
| Nominal breakaway current per solenoid coil | 110 mA up to 20 ms |
| Nominal current with current reduction | 30 mA after 20 ms |
| Characteristic coil data | 24 V DC: low-current phase 1 W, high-current phase 2.4 W |
| Permissible voltage fluctuation | +/- 10 % |
| Operating medium | Compressed air in accordance with ISO8573-1:2010 [7:4:4] |
| Note on operating and pilot medium | Lubricated operation possible (subsequently required for further operation) |
| Vibration resistance | Transport application test at severity level 2 in accordance with FN 942017-4 and EN 60068-2-6 |
| Shock resistance | Shock test with severity level 2 in accordance with FN 942017-5 and EN 60068-2-27 |
| Corrosion resistance classification CRC | 2 - Moderate corrosion stress |
| PWIS conformity | VDMA24364-B1/B2-L |
| Medium temperature | -5 ... 50 °C |
| Relative air humidity | 0 - 90 % |
| Protection against direct and indirect contact | Protective extra-low voltage with safe disconnection (PELV) |
| Pilot medium | Compressed air in accordance with ISO8573-1:2010 [7:4:4] |
| Ambient temperature | -5 ... 50 °C |
| Max. tightening torque, valve mounting | 1.8 ... 2.2 Nm |
| Product weight | 270 g |
| Electrical connection | 3-pin M12x1 Central plug Round design |
| Mounting type | On sub-base With through-hole and screw |
| Auxiliary pilot air port 12/14 | Connection plate size 26 mm, according to ISO 15407-1 |
| Pilot exhaust port 82/84 | Optional Not ducted as per standard Ducted |
| Materials note | Conforms to RoHS |
| Material seals | FPM HNBR NBR |
| Material housing | Aluminium die cast |