

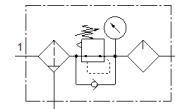
service unit combination

MSB6N-1/2-FRC9:J11M2

Part number: 534001

FESTO

Filter-regulator-lubricator combination, 12 bar maximum output pressure, 40 µm filter, with pressure gauge, lockable regulator head, metal bowl, manual condensate drain, direction of flow: from left to right.



Data sheet

Feature	Value
Size	6
Series	MS
Actuator lock	Rotary knob with integrated lock
Assembly position	Vertical +/- 5°
Grade of filtration	40 µm
Condensate drain	manual rotary
Design structure	Filter regulator with pressure gauge proportional standard mist lubricator
Controller function	Output pressure constant with initial pressure compensation with secondary exhaust with return flow
Bowl guard	integrated as metal shell
Pressure gauge	with pressure gauge
Operating pressure	1.5 ... 20 bar
Pressure regulation range	0.5 ... 12 bar
Standard nominal flow rate	3,700 l/min
Operating medium	Compressed air to ISO 8573-1:2010 [-:4:-] Inert gases
Note on operating and pilot medium	Lubricated operation possible (subsequently required for further operation)
Corrosion resistance classification CRC	2 - Moderate corrosion stress
PWIS conformity	VDMA24364-B1/B2-L
Storage temperature	-10 ... 60 °C
Food-safe	See Supplementary material information
Air purity class at output	Compressed air in accordance with ISO8573-1:2010 [7:4:-]
Medium temperature	-10 ... 60 °C
Ambient temperature	-10 ... 60 °C
Product weight	1,713 g
Mounting type	with accessories
Pneumatic connection, port 1	1/2 NPT
Pneumatic connection, port 2	1/2 NPT
Materials note	Conforms to RoHS