

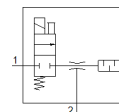
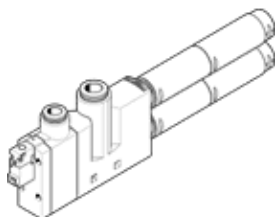
vacuum generator

VN-20-H-T6-PQ4-VQ5-RO2-M

Part number: 532656

FESTO

With built-in solenoid valve. Standard, high vacuum, width 24 mm, T shape with plug connector and open silencer.



Data sheet

| Feature | Value |
|---|--|
| Nominal size, Laval nozzle | 2 mm |
| Grid dimension | 24 mm |
| Design, silencer | open |
| Assembly position | Any |
| Ejector characteristic | Standard High vacuum |
| Manual override | Pushing |
| Integrated function | Electrical on-off valve Open silencer |
| Design structure | T-shaped |
| Valve function | 2/2 |
| Operating pressure for max. suction rate | 2 bar |
| Operating pressure | 2 ... 8 bar |
| Operating pressure for max. vacuum | 3.5 bar |
| Max. vacuum | 92 % |
| Nominal operating pressure | 6 bar |
| Max. suction rate with respect to atmosphere | 98 l/min |
| Air supply time at nominal operating pressure | 0.24 s |
| Operating voltage range DC | 21.6 ... 26.4 V |
| Electrical power consumption | 1.2 W |
| Duty cycle | 100 % |
| Operating medium | Compressed air in accordance with ISO8573-1:2010 [7:4:4] |
| Note on operating and pilot medium | Lubricated operation not possible |
| Corrosion resistance classification CRC | 1 - Low corrosion stress |
| PWIS conformity | VDMA24364 zone III |
| Medium temperature | 0 ... 50 °C |
| Noise level at nominal operating pressure | 63 dB(A) |
| Protection class | IP40 |
| Ambient temperature | 0 ... 50 °C |
| Product weight | 215 g |
| Electrical connection | Plug |
| Mounting type | with through hole with accessories |
| Pneumatic connection, port 1 | QS-10 |
| Pneumatic connection, port 3 | Open silencer |
| Vacuum connection | QS-12 |
| Material of connecting thread | Wrought aluminium alloy, anodised |
| Materials note | Conforms to RoHS |
| Material seals | NBR |
| Material receiver nozzle | POM |
| Material housing | PA-reinforced POM-reinforced |
| Material silencer | Wrought Aluminium alloy |

| Feature | Value |
|-----------------------------|-------------------------|
| | POM PU foam |
| Material screws | Steel |
| Material transmitter nozzle | Wrought Aluminium alloy |
| Material fitting | Brass Nickel plated |