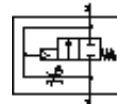
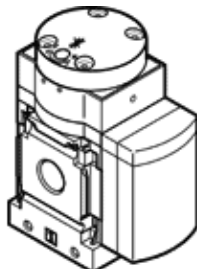


Soft-start valve MS6N-DL-1/2-Z

Part number: 532027

FESTO

Pneumatic, for gradual pressure build-up, direction of flow: from right to left.



Data sheet

Feature	Value
Exhaust-air function	throttleable
Type of actuation	pneumatic
Assembly position	Any
Manual override	None
Design structure	Piston seat
Type of reset	mechanical spring
Type of piloting	direct
Pilot air supply	external
Flow direction	non reversible
Valve function	2/2
Operating pressure	4 ... 18 bar
b value	0.39
C value	28.97 l/sbar
Standard nominal flow rate	6,450 l/min
Corrosion resistance classification CRC	2
Medium temperature	-10 ... 60 °C
Ambient temperature	-10 ... 60 °C
Product weight	650 g
Mounting type	with accessories Optional Line installation
Pneumatic connection, port 1	NPT1/2-14
Pneumatic connection, port 2	NPT1/2-14
Materials note	Free of copper and PTFE
Materials information for seals	NBR
Materials information, housing	Aluminium die cast