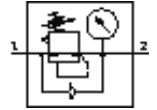
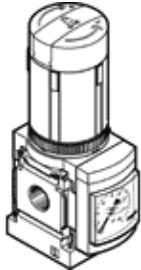


Pressure regulator MS6N-LR-1/2-D6-AS-Z

Part number: 531452

FESTO

7 bar maximum output pressure, with pressure gauge, lockable regulator head, direction of flow: from right to left.



Data sheet

Feature	Value
Size	6
Series	MS
Actuator lock	with accessories, lockable
Assembly position	Any
Design structure	directly-controlled diaphragm regulator
Controller function	Output pressure constant with initial pressure compensation with secondary exhaust
Pressure gauge	with pressure gauge
Pressure control range	0.3 ... 7 bar
Inlet pressure 1	0.8 ... 20 bar
Max. pressure hysteresis	0.25 bar
Standard nominal flow rate	6,500 l/min
Operating medium	Compressed air
Corrosion resistance classification CRC	2
Storage temperature	-10 ... 60 °C
Medium temperature	-10 ... 60 °C
Ambient temperature	-10 ... 60 °C
Product weight	730 g
Mounting type	with accessories Optional Front panel installation Line installation
Pneumatic connection, port 1	NPT1/2-14
Pneumatic connection, port 2	NPT1/2-14
Materials information for control panel	POM PA
Materials information for seals	NBR
Materials information, housing	Aluminium die cast
Materials information for membrane	NBR