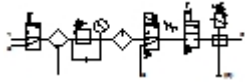


MSB4-1/4:C1J3M1D1A1F3-WP

Service unit combination

Feature	Data/description
Size	4
Series	MS
Actuator lock	Rotary knob with integrated lock
Assembly position	Vertical +/- 5°
Grade of filtration	5 µm
Condensate drain	manual rotary
Design structure	Branching module Start-up valve Pressure sensor On/off valve Filter regulator with pressure gauge Standard oil-mist lubricator
Controller function	with initial pressure compensation with secondary exhaust with return flow Output pressure constant
Bowl guard	Plastic guard
Pressure gauge	with pressure gauge
Pressure control range	4 - 12 bar
Inlet pressure 1	4,5 - 14 bar
Standard nominal flow rate	550 l/min
Operating medium	Filtered, unlubricated compressed air, 40 µm filtration Filtered, lubricated compressed air, 40 µm filtration
Corrosion resistance classification CRC	2
Storage temperature	-10 - 60 °C
Air purity class at output	3.7.- per DIN ISO 8573-1
Medium temperature	-10 - 60 °C
Ambient temperature	-10 - 60 °C



MSB4-1/4:C1J3M1D1A1F3-WP

Service unit combination

Feature	Data/description
Product weight	2.300 g
Mounting type	with accessories
Pneumatic connection, port 1	G1/4
Pneumatic connection, port 2	G1/4
Pneumatic connection, port 3	G1/4