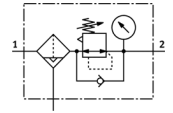


# Filter regulator MS6-LFR-3/8-D7-CUV-AS-Z

Part number: 530349

FESTO

Maximum output pressure 12 bar, 5 µm filter, with pressure gauge, lockable regulator head, metal bowl guard, fully automatic condensate drain, flow direction from right to left.



## Data sheet

| Feature                                 | Value   |
|---|---|
| Size                                    | 6   |
| Series                                  | MS  |
| Actuator lock                           | Rotary knob with lock with accessories, lockable                              |
| Assembly position                       | Vertical +/- 5°   |
| Grade of filtration                     | 5 µm  |
| Condensate drain                        | fully automatic   |
| Design structure                        | Filter regulator with pressure gauge  |
| Max. condensate volume                  | 38 ml   |
| Controller function                     | Output pressure constant with secondary exhaust                               |
| Bowl guard                              | integrated as metal shell   |
| Pressure gauge                          | with pressure gauge   |
| Operating pressure                      | 2 ... 12 bar  |
| Pressure control range                  | 0.5 ... 12 bar  |
| Max. pressure hysteresis                | 0.25 bar  |
| Standard nominal flow rate              | 3,500 l/min   |
| Operating medium                        | Compressed air in accordance with ISO8573-1:2010 [7:4:-]<br>Inert gases       |
| Corrosion resistance classification CRC | 2   |
| Storage temperature                     | -10 ... 60 °C   |
| Air purity class at output              | Compressed air in accordance with ISO8573-1:2010 [6:4:4]                      |
| Medium temperature                      | 5 ... 60 °C   |
| Ambient temperature                     | 5 ... 60 °C   |
| Product weight                          | 1,087 g   |
| Mounting type                           | Optional<br>Front panel installation<br>Line installation<br>with accessories |
| Pneumatic connection, port 1            | G3/8  |
| Pneumatic connection, port 2            | G3/8  |
| Materials note                          | Conforms to RoHS  |
| Materials information for seals         | NBR   |
| Materials information, housing          | Aluminium die cast  |
| Materials information for bowl          | Wrought Aluminium alloy   |
| Material information, isolating disc    | POM   |