

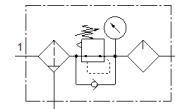
service unit combination

MSB6-1/2-FRC9:J11M2

Part number: 530252

FESTO

Filter-regulator-lubricator combination, 12 bar maximum output pressure, 40 µm filter, with pressure gauge, lockable regulator head, metal bowl, manual condensate drain, direction of flow: from left to right.



Data sheet

| Feature | Value |
|---|--|
| Size | 6 |
| Series | MS |
| Actuator lock | Rotary knob with integrated lock |
| Assembly position | Vertical +/- 5° |
| Condensate drain | manual rotary |
| Design structure | Filter regulator with pressure gauge proportional standard mist lubricator |
| Grade of filtration | 40 µm |
| Controller function | Output pressure constant with initial pressure compensation with secondary exhaust with return flow |
| Bowl guard | integrated as metal shell |
| Pressure gauge | with pressure gauge |
| Operating pressure | 1.5 ... 20 bar |
| Pressure regulation range | 0.5 ... 12 bar |
| Standard nominal flow rate | 3,700 l/min |
| Operating medium | Compressed air to ISO 8573-1:2010 [-:4:-] Inert gases |
| Note on operating and pilot medium | Lubricated operation possible (subsequently required for further operation) |
| Corrosion resistance classification CRC | 2 - Moderate corrosion stress |
| PWIS conformity | VDMA24364-B1/B2-L |
| Storage temperature | -10 ... 60 °C |
| Food-safe | See Supplementary material information |
| Air purity class at output | Compressed air in accordance with ISO8573-1:2010 [7:4:-] |
| Medium temperature | -10 ... 60 °C |
| Ambient temperature | -10 ... 60 °C |
| Product weight | 1,713 g |
| Mounting type | with accessories |
| Pneumatic connection, port 1 | G1/2 |
| Pneumatic connection, port 2 | G1/2 |
| Materials note | Conforms to RoHS |