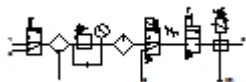


MSB6-1/2:C1J1M1D1A1F3-WP

Service unit combination

Feature	Data/description
Size	6
Series	MS
Actuator lock	Rotary knob with integrated lock
Assembly position	Vertical +/- 5°
Grade of filtration	40 µm
Condensate drain	manual rotary
Design structure	Branching module Start-up valve Pressure sensor On/off valve Filter regulator with pressure gauge Standard oil-mist lubricator
Controller function	with initial pressure compensation with secondary exhaust with return flow Output pressure constant
Bowl guard	Plastic guard
Pressure gauge	with pressure gauge
Pressure control range	4 - 12 bar
Inlet pressure 1	4,5 - 18 bar
Standard nominal flow rate	2.300 l/min
Operating medium	Compressed air
Corrosion resistance classification CRC	2
Storage temperature	-10 - 60 °C
Air purity class at output	5:7:- per DIN ISO 8573-1
Medium temperature	-10 - 60 °C
Ambient temperature	-10 - 60 °C



MSB6-1/2:C1J1M1D1A1F3-WP

Service unit combination

Feature	Data/description
Product weight	4.400 g
Mounting type	with accessories
Pneumatic connection, port 1	G1/2
Pneumatic connection, port 2	G1/2
Pneumatic connection, port 3	G1/2