

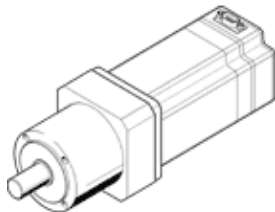
Stepper motor MTR-ST-87-48S-GB

Part number: 530068

FESTO

With gearbox and brake.

Discontinued, available through 2008



Data sheet

Feature	Value
Torsional backlash	≤ 0.25 deg
Type of gear unit	Planetary gear unit
Gear unit ratio	4:1
Operating voltage DC for brake	24 V
Insulation protection class	B
Power consumption, brake	9 W
Nominal voltage DC	48 V
Nominal motor current	4.7 A
CE mark (see declaration of conformity)	to EU directive for EMC
Storage temperature	-25 ... 60 °C
Relative air humidity	45 - 80 %
Protection class	IP43
Ambient temperature	0 ... 50 °C
Overall mass moment of inertia at power take-off	4.6 kgcm ²
Gear-unit output torque	23 Nm
Gear unit efficiency	0.9
Brake holding torque	1.4 Nm
Motor holding torque	6.47 Nm
Mass moment of inertia of brake	0.1 kgcm ²
Mass moment of inertia of gear unit	0.52 kgcm ²
Mass moment of inertia of rotor	4 kgcm ²
Torsional resistance	≤ 5.2 Nm/arc
Permissible axial shaft load	1,200 N
Permissible radial shaft load	950 N
Product weight	7,200 g
Electrical connector system	Plug