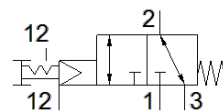


# pushbutton valve VHEF-PTCZ-B32-N18

Part number: 5299720

FESTO



## Data sheet

Feature	Value
Valve function	3/2 bistable
Type of actuation	manual
Width	20 mm
Standard nominal flow rate	750 l/min
Operating pressure MPa	-0.095 ... 1 MPa
Operating pressure	-0.95 ... 10 bar
Design structure	Poppet seat
Nominal size	5.6 mm
Exhaust-air function	throttleable
Instructions for use	Actuate only manually
Sealing principle	soft
Assembly position	Any
Manual override	detenting
Type of piloting	Piloted
Pilot air supply	external
Flow direction	reversible
Overlap	Zero overlap
Pilot pressure MPa	0.3 ... 1 MPa
Pilot pressure	3 ... 10 bar 43.5 ... 145 psi
Max. switching frequency	0.5 Hz
Operating medium	Compressed air in accordance with ISO8573-1:2010 [7:-:-]
Note on operating and pilot medium	Lubricated operation possible (subsequently required for further operation)
Corrosion resistance classification CRC	1 - Low corrosion stress
PWIS conformity	VDMA24364-B1/B2-L
Medium temperature	-10 ... 60 °C
Ambient temperature	-10 ... 60 °C
Actuating force	20 N
Release force	25 N
Product weight	168 g
Mounting type	Front panel installation with through hole Optional
Auxiliary pilot air port 12/14	M5
Pilot air port 12	M5
Pneumatic connection, port 1	1/8 NPT
Pneumatic connection, port 2	1/8 NPT
Pneumatic connection, port 3	1/8 NPT
Materials note	Conforms to RoHS
Material cover	PA-reinforced
Material seals	NBR
Material housing	Anodised wrought aluminium alloy