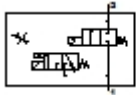


MS6-DE-1/4-V24-Z

Pressure build-up valve

Feature	Data/description
Exhaust-air function	throttleable
Type of actuation	electrical
Sealing principle	soft
Assembly position	Any
Manual override	resetting detenting
Design structure	Piston seat
Type of reset	mechanical spring
Type of piloting	Piloted
Pilot air supply	external
Flow direction	non reversible
Valve function	2/2
Switching position indicator	with accessories
Operating pressure	4 - 18 bar
b value	0,54
C value	11,22 l/sbar
Standard nominal flow rate	2.700 l/min
Characteristic coil data	24V DC
Corrosion resistance classification CRC	2
Medium temperature	-10 - 60 °C
Ambient temperature	-10 - 60 °C
Product weight	680 g
Electrical connection	Design C



MS6-DE-1/4-V24-Z

Pressure build-up valve

Feature	Data/description
Mounting type	Optional Line installation with accessories
Pneumatic connection, port 1	G1/4
Pneumatic connection, port 2	G1/4
Materials note	Copper and PTFE-free
Materials information for seals	NBR
Materials information, housing	Aluminium die cast