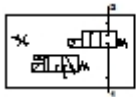


## MS6-DE-1/2-V24-Z

### Pressure build-up valve

| Feature                                 | Data/description       |
|---|------------------------|
| Exhaust-air function                    | throttleable           |
| Type of actuation                       | electrical             |
| Sealing principle                       | soft                   |
| Assembly position                       | Any                    |
| Manual override                         | resetting<br>detenting |
| Design structure                        | Piston seat            |
| Type of reset                           | mechanical spring      |
| Type of piloting                        | Piloted                |
| Pilot air supply                        | external               |
| Flow direction                          | non reversible         |
| Valve function                          | 2/2                    |
| Switching position indicator            | with accessories       |
| Operating pressure                      | 4 - 18 bar             |
| b value                                 | 0,39                   |
| C value                                 | 28,97 l/sbar           |
| Standard nominal flow rate              | 6.450 l/min            |
| Characteristic coil data                | 24V DC                 |
| Corrosion resistance classification CRC | 2                      |
| Medium temperature                      | -10 - 60 °C            |
| Ambient temperature                     | -10 - 60 °C            |
| Product weight                          | 680 g                  |
| Electrical connection                   | Design C               |



## MS6-DE-1/2-V24-Z

### Pressure build-up valve

| Feature                         | Data/description                                  |
|---------------------------------|---|
| Mounting type                   | Optional<br>Line installation<br>with accessories |
| Pneumatic connection, port 1    | G1/2  |
| Pneumatic connection, port 2    | G1/2  |
| Materials note                  | Copper and PTFE-free                              |
| Materials information for seals | NBR   |
| Materials information, housing  | Aluminium die cast                                |