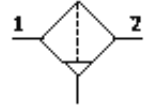
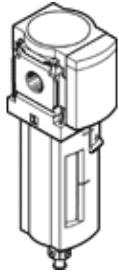


Filter MS6-LF-1/2-CUM-Z

Part number: 529612

FESTO

5 µm filter, metal bowl, manual condensate drain, direction of flow: from right to left.



Data sheet

| Feature | Value |
|---|---|
| Size | 6 |
| Series | MS |
| Assembly position | Vertical +/- 5° |
| Grade of filtration | 5 µm |
| Condensate drain | manual rotary |
| Design structure | Sintered filter with centrifugal separator |
| Max. condensate volume | 38 cm ³ |
| Bowl guard | Metal bowl guard |
| Inlet pressure 1 | 0 ... 20 bar |
| Standard nominal flow rate | 3,200 l/min |
| Operating medium | Compressed air |
| Corrosion resistance classification CRC | 2 |
| Storage temperature | -10 ... 60 °C |
| Air purity class at output | 3.7.- per DIN ISO 8573-1 |
| Medium temperature | -10 ... 60 °C |
| Ambient temperature | -10 ... 60 °C |
| Product weight | 820 g |
| Mounting type | with accessories Optional Line installation |
| Pneumatic connection, port 1 | G1/2 |
| Pneumatic connection, port 2 | G1/2 |
| Materials note | Free of copper and PTFE |
| Materials information for seals | NBR |
| Materials information for filter | PE |
| Materials information, housing | Aluminium die cast |
| Materials information for bowl | Wrought Aluminium alloy |