

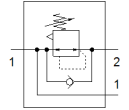
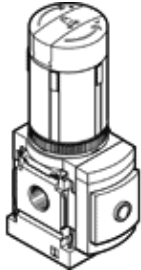
# pressure regulator

## MS4-LRB-1/4-D6-A8-AS

Part number: 529477

FESTO

For manifold assembly, maximum output pressure 7 bar, with adapter G1/8 for pressure gauge acc. to EN 837, port P2 on reverse side.



## Data sheet

| Feature                                 | Value  |
|---|--|
| Size                                    | 4  |
| Series                                  | MS   |
| Actuator lock                           | Rotary knob with lock<br>with accessories, lockable  |
| Assembly position                       | Any  |
| Design structure                        | directly-controlled diaphragm regulator<br>with looped-through compressed air supply                         |
| Controller function                     | Output pressure constant<br>with initial pressure compensation<br>with secondary exhaust<br>with return flow |
| Pressure gauge                          | Prepared for G1/8  |
| Operating pressure                      | 0.8 ... 14 bar   |
| Pressure regulation range               | 0.3 ... 7 bar  |
| Max. pressure hysteresis                | 0.25 bar   |
| Standard nominal flow rate              | 1,700 l/min  |
| Operating medium                        | Compressed air in accordance with ISO8573-1:2010 [7:4:4]<br>Inert gases                                      |
| Note on operating and pilot medium      | Lubricated operation possible (subsequently required for further operation)                                  |
| Corrosion resistance classification CRC | 2 - Moderate corrosion stress  |
| PWIS conformity                         | VDMA24364-B1/B2-L  |
| Storage temperature                     | -10 ... 60 °C  |
| Food-safe                               | See Supplementary material information   |
| Medium temperature                      | -10 ... 60 °C  |
| Ambient temperature                     | -10 ... 60 °C  |
| Product weight                          | 222 g  |
| Mounting type                           | Front panel installation<br>Line installation<br>with accessories<br>Optional                                |
| Pneumatic connection, port 1            | G1/4   |
| Pneumatic connection, port 2            | G1/4   |
| Materials note                          | Conforms to RoHS   |
| Material of connecting plate            | Aluminium die cast   |
| Material control panel                  | PA<br>POM  |
| Material seals                          | NBR  |
| Material housing                        | Aluminium die cast   |
| Material membrane                       | NBR  |