

# Solenoid valve

## CPPSC1-M1H-I-H-QA

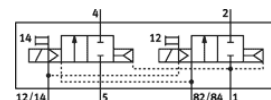
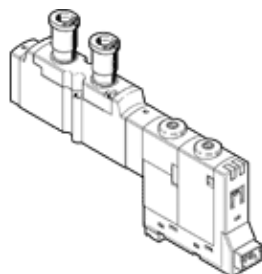
Part number: 527365  
Product to be discontinued

FESTO

For valve terminal CPA-SC, QS push-in connector on top, with plug connection at rear.

This product is only available if ordered from the Festo Corporation, USA.

Type to be discontinued. Available until 2014. See Support Portal for alternative products.



## Data sheet

| Feature                                 | Value   |
|---|---|
| Valve function                          | 2x2/2 closed, monostable  |
| Type of actuation                       | electrical  |
| Standard nominal flow rate              | 130 l/min   |
| Operating pressure                      | 3 ... 10 bar  |
| Design structure                        | Piston slide  |
| Type of reset                           | Air spring  |
| Protection class                        | IP20  |
| Authorisation                           | c UL us - Recognized (OL)   |
| Exhaust-air function                    | throttleable  |
| Sealing principle                       | soft  |
| Assembly position                       | Any   |
| Manual override                         | detenting<br>Pushing  |
| Type of piloting                        | Piloted   |
| Flow direction                          | non reversible  |
| Switching position indicator            | Yes   |
| Pilot pressure                          | 3 ... 8 bar   |
| b value                                 | 0.38  |
| C value                                 | 0.55 l/sbar   |
| Switching time off                      | 20 ms   |
| Switching time on                       | 10 ms   |
| Characteristic coil data                | 24V DC: 1W  |
| Operating medium                        | Compressed air in accordance with ISO8573-1:2010 [7:4:4]                    |
| Note on operating and pilot medium      | Lubricated operation possible (subsequently required for further operation) |
| CE mark (see declaration of conformity) | to EU directive for EMC   |
| Corrosion resistance classification CRC | 1   |
| Medium temperature                      | -5 ... 50 °C  |
| Sound pressure level                    | 95 dB(A)  |
| Pilot medium                            | Compressed air in accordance with ISO8573-1:2010 [7:4:4]                    |
| Ambient temperature                     | -5 ... 40 °C  |
| Product weight                          | 40 g  |
| Electrical connection                   | 3-pin<br>Plug   |
| Mounting type                           | with through hole   |
| Pneumatic connection, port 1            | Sub-base  |
| Pneumatic connection, port 2            | QS-1/8  |
| Pneumatic connection, port 3            | Sub-base  |
| Pneumatic connection, port 4            | QS-1/8  |
| Pneumatic connection, port 5            | Sub-base  |
| Materials information for seals         | FPM<br>HNBR<br>NBR  |
| Materials information, housing          | Aluminium die cast  |