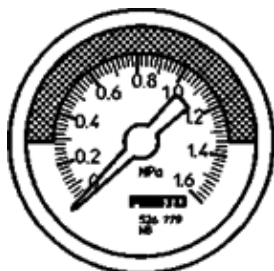


pressure gauge MA-40-1,6-R1/8-MPA-E-RG

Part number: 526779

FESTO

With display unit in MPa, adjustable red/green range.



Data sheet

Feature	Value
Display range	0 ... 1.6 MPa
Conforms to standard	EN 837-1
Nominal size of pressure gauge	40
Design structure	Bourdon-tube pressure gauge
Mounting type	Line installation
Operating medium	Inert gases Neutral fluids
Operating pressure MPa	0 ... 1.6 MPa
Operating pressure	0 ... 16 bar 0 ... 232 psi
Alternating load factor	0.66
Measurement accuracy class	2,5
Protection class	IP43
Medium temperature	-20 ... 60 °C
Ambient temperature	-20 ... 60 °C
PWIS conformity	VDMA24364-B1/B2-L
Materials note	Conforms to RoHS
Position of connection	Rear side central
Pneumatic connection	R1/8
Materials in contact with media	Brass
Material of threaded plug	Brass
Material housing	ABS
Material screen	PMMA
Housing colour	Black
Product weight	60 g
Note on operating and pilot medium	No acetylene No oxygen