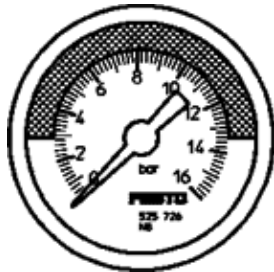


Pressure gauge MA-63-16-R1/4-E-RG

Part number: 525732
Product to be discontinued

FESTO

With display unit in bar, adjustable red/green range.
Type to be discontinued. Available until 2014. See Support Portal for alternative products.



Data sheet

Feature	Value
Indicating range [bar]	0 ... 16 bar
Conforms to standard	EN 837-1
Nominal size of pressure gauge	63
Design structure	Bourdon-tube pressure gauge
Mounting type	Line installation
Operating medium	Inert gases Neutral fluids
Operating pressure	0 ... 16 bar
Alternating load factor	0.66
Measurement accuracy class	2,5
Protection class	IP43
Medium temperature	-20 ... 60 °C
Ambient temperature	-20 ... 60 °C
Materials note	Conforms to RoHS
Position of connection	Rear side central
Pneumatic connection	R1/4
Materials in contact with media	Brass
Materials information for screw-in stud	Brass
Materials information, housing	ABS
Materials info, viewing window	PMMA
Housing colour	Black
Product weight	90 g
Note on operating and pilot medium	No oxygen No acetylene