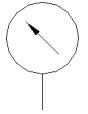
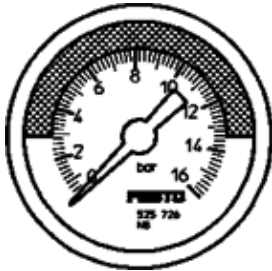


pressure gauge MA-50-16-R1/4-E-RG

Part number: 525729

FESTO

With display unit in bar, adjustable red/green range.



Data sheet

Feature	Value
Indicating range [bar]	0 ... 16 bar
Conforms to standard	EN 837-1
Nominal size of pressure gauge	50
Design structure	Bourdon-tube pressure gauge
Mounting type	Line installation
Operating medium	Inert gases Neutral fluids
Operating pressure MPa	0 ... 1.6 MPa
Operating pressure	0 ... 16 bar 0 ... 232 psi
Alternating load factor	0.66
Measurement accuracy class	2,5
Protection class	IP43
Medium temperature	-20 ... 60 °C
Ambient temperature	-20 ... 60 °C
PWIS conformity	VDMA24364-B1/B2-L
Materials note	Conforms to RoHS
Position of connection	Rear side central
Pneumatic connection	R1/4
Materials in contact with media	Brass
Material of threaded plug	Brass
Material housing	ABS
Material screen	PMMA
Housing colour	Black
Product weight	75 g
Note on operating and pilot medium	No acetylene No oxygen