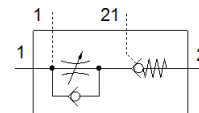
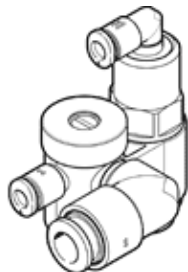


one-way flow control valve GRXA-HG-1/4-QS-6

Part number: 525669
Product to be discontinued

FESTO

With stopper function and QS push-in connector
Type to be discontinued. Available until 2019. See Support Portal for alternative products.



Data sheet

| Feature | Value |
|--------------------------------------------------------------------|-----------------------------------------------------------------------------|
| Valve function | One-way flow control function for exhaust air |
| Pneumatic connection, port 1 | QS-6 |
| Pneumatic connection, port 2 | G1/4 |
| Type of actuation | pneumatic |
| Adjusting element | Slotted head screw |
| Mounting type | Threaded with external (male) thread |
| Standard nominal flow rate in flow control direction | 280 l/min |
| Pilot pressure | 2 ... 10 bar |
| Ambient temperature | -10 ... 60 °C |
| Assembly position | Any |
| Operating pressure complete temperature range | 0.5 ... 10 bar |
| Standard flow rate in direction of flow control: 6 -> 0 bar | 430 l/min |
| Standard flow rate in non-return direction: 6 -> 0 bar, actuated | 410 ... 470 l/min |
| Standard flow rate in non-return direction: 6 -> 0 bar, unactuated | 430 ... 490 l/min |
| Standard nominal flow rate in non-return direction, actuated | 180 ... 260 l/min |
| Standard nominal flow rate in non-return direction, unactuated | 200 ... 270 l/min |
| Switching time off | 44 ms |
| Switching time on | 6 ms |
| Operating medium | Compressed air in accordance with ISO8573-1:2010 [7:4:4] |
| Note on operating and pilot medium | Lubricated operation possible (subsequently required for further operation) |
| Storage temperature | -10 ... 40 °C |
| Medium temperature | -10 ... 60 °C |
| Pilot medium | Compressed air in accordance with ISO8573-1:2010 [7:4:4] |
| Nominal tightening torque | 11 Nm |
| Tolerance for nominal tightening torque | ± 10 % |
| Product weight | 58.8 g |
| Materials note | Conforms to RoHS |
| Material cover | Wrought Aluminium alloy Anodised |
| Material seals | NBR |
| Material hollow bolt | Wrought Aluminium alloy Anodised |
| Material release ring | POM |
| Material adjusting screw | Brass |
| Material swivel fitting | POM |