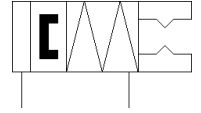
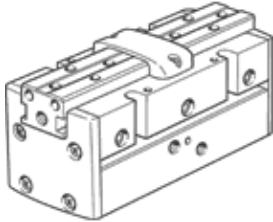


# parallel gripper HGPP-25-A-G2

Part number: 525663

FESTO

Precise, for position sensing via hall effect sensor or inductive sensors.  
With gripping force retention when closing...-G2.



## Data sheet

Feature	Value
Size	25
Stroke per gripper jaw	10 mm
Max. replacement accuracy	0.1 mm
Repetition accuracy, gripper	≤ 0.02 mm
Number of gripper fingers	2
Drive system	pneumatic
Mode of operation	double-acting
Gripper function	Parallel
Gripper force back-up	On closing
Design structure	Rack and pinion
Position detection	For Hall sensors For inductive sensors
Operating pressure	5 ... 8 bar
Max. operating frequency of gripper	4 Hz
Min. opening time at 0.6 MPa (6 bar, 87 psi)	105 ms
Min. closing time at 0.6 MPa (6 bar, 87 psi)	90 ms
Max. mass per external gripper finger	250 g
Operating medium	Compressed air in accordance with ISO8573-1:2010 [7:4:4]
Note on operating and pilot medium	Lubricated operation possible (subsequently required for further operation)
Corrosion resistance classification CRC	2 - Moderate corrosion stress
PWIS conformity	VDMA24364-B2-L
Ambient temperature	5 ... 60 °C
Max. force on gripper jaw Fz static	380 N
Max. torque at gripper Mx static	21 Nm
Max. torque at gripper My static	21 Nm
Max. torque at gripper Mz static	21 Nm
Product weight	898 g
Mounting type	with internal (female) thread
Pneumatic connection	M5
Materials note	Conforms to RoHS
Material cover cap	POM
Material housing	Hard anodised wrought aluminium alloy
Material gripper jaws	Wrought aluminium alloy, nickel-plated