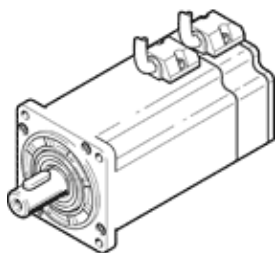


servo motor EMMB-AS-60-04-K-S

Part number: 5219178

FESTO



Data sheet

Feature	Value
Ambient temperature	-20 ... 40 °C
Storage temperature	-20 ... 70 °C
Relative air humidity	0 - 90 %
Conforms to standard	IEC 60034
Insulation protection class	F
Rating class according to EN 60034-1	S1
Protection class	IP65
Shaft design Woodruff key	DIN 6885 A 5 x 5 x 16
Electrical connector system	Plug
Materials note	Contains PWIS substances Conforms to RoHS
Corrosion resistance classification CRC	0 - No corrosion stress
CE mark (see declaration of conformity)	to EU directive for EMC to EU directive low-voltage devices
Authorisation	c UL us - Recognized (OL)
Nominal operating voltage DC	300 V
Nominal voltage DC	300 V
Standstill torque	1.4 Nm
Nominal torque	1.27 Nm
Peak torque	3.81 Nm
Nominal rotary speed	3,000 1/min
Max. speed	6,000 1/min
Nominal motor power	400 W
Continuous open-circuit current	2.6 A
Nominal motor current	2.4 A
Peak current	7.2 A
Motor constant	0.562 Nm/A
Voltage constant, phase-to-phase	34 mVmin
Phase-phase winding resistance	5.8 Ohm
Phase-phase winding inductance	11.5 mH
Overall mass moment of inertia at power take-off	0.405 kgcm ²
Product weight	1,600 g
Permissible axial shaft load	90 N
Permissible radial shaft load	180 N
Rotor position sensor	Absolute single turn encoder
Rotary position encoder interface	Nikon A format
Rotary position encoder measuring principle	Optical
Rotary position encoder, typical resolution	20 Bit
Rotary position encoder, typical angular accuracy	20 arcmin