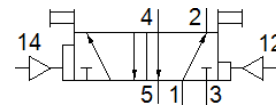
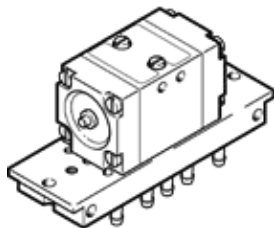


pneumatic valve
JD-5-PK-3
 Part number: 4901

FESTO



Data sheet

Feature	Value
Valve function	5/2 bistable-dominant
Standard nominal flow rate	105 l/min
Operating pressure	1 ... 8 bar
Design structure	Poppet seat
Nominal size	2.5 mm
Switching time reversal	9 ms
Switching time reversal (dominating)	25 ms
Operating medium	Compressed air in accordance with ISO8573-1:2010 [7:-:-]
PWIS conformity	VDMA24364-B1/B2-L
Ambient temperature	0 ... 60 °C
Product weight	130 g
Mounting type	On sub-base On mounting frame with through hole Optional
Auxiliary pilot air port 12	PK-3
Auxiliary pilot air port 14	PK-3
Pneumatic connection, port 1	PK-3
Pneumatic connection, port 2	PK-3
Pneumatic connection, port 3	PK-3
Pneumatic connection, port 4	PK-3
Pneumatic connection, port 5	PK-3
Materials note	Conforms to RoHS
Material of connecting plate	Brass PPS-reinforced
Material seals	NBR
Material housing	Plastic Zinc die-casting