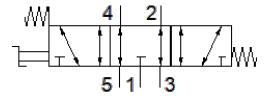


# hand lever valve

## VHEF-HS-P53E-M-N14

Part number: 4414860

FESTO



### Data sheet

Feature	Value
Valve function	5/3 exhausted
Type of actuation	manual
Width	20 mm
Standard nominal flow rate	900 l/min
Operating pressure MPa	-0.095 ... 1 MPa
Operating pressure	-0.95 ... 10 bar
Design structure	Piston slide
Type of reset	mechanical spring
Nominal size	7 mm
Exhaust-air function	throttleable
Instructions for use	Actuate only manually
Sealing principle	soft
Assembly position	Any
Type of piloting	direct
Flow direction	reversible
Overlap	Positive overlap
Max. switching frequency	0.5 Hz
Operating medium	Compressed air in accordance with ISO8573-1:2010 [7:::]
Note on operating and pilot medium	Lubricated operation possible (subsequently required for further operation)
Corrosion resistance classification CRC	1 - Low corrosion stress
PWIS conformity	VDMA24364-B1/B2-L
Medium temperature	-10 ... 60 °C
Ambient temperature	-10 ... 60 °C
Actuation torque	0.7 Nm
Max. force on actuator	200 N
Max. transverse force on actuator	200 N
Product weight	298 g
Mounting type	Front panel installation with through hole Optional
Pneumatic connection, port 1	1/4 NPT
Pneumatic connection, port 2	1/4 NPT
Pneumatic connection, port 3	1/4 NPT
Pneumatic connection, port 4	1/4 NPT
Pneumatic connection, port 5	1/4 NPT
Materials note	Conforms to RoHS
Material cover	PA-reinforced
Material seals	NBR
Material housing	Anodised wrought aluminium alloy
Material lever	PA-reinforced