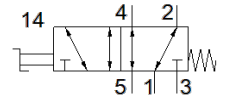


# hand lever valve

## VHEF-HS-M52-M-G14

Part number: 4165856

FESTO



### Data sheet

| Feature                                 | Value   |
|---|---|
| Valve function                          | 5/2 monostable  |
| Type of actuation                       | manual  |
| Width                                   | 20 mm   |
| Standard nominal flow rate              | 1,200 l/min   |
| Operating pressure MPa                  | -0.095 ... 1 MPa  |
| Operating pressure                      | -0.95 ... 10 bar  |
| Design structure                        | Piston slide  |
| Type of reset                           | mechanical spring   |
| Nominal size                            | 7 mm  |
| Exhaust-air function                    | throttleable  |
| Instructions for use                    | Actuate only manually   |
| Sealing principle                       | soft  |
| Assembly position                       | Any   |
| Type of piloting                        | direct  |
| Flow direction                          | reversible  |
| Overlap                                 | Positive overlap  |
| Max. switching frequency                | 0.5 Hz  |
| Operating medium                        | Compressed air in accordance with ISO8573-1:2010 [7:::]                     |
| Note on operating and pilot medium      | Lubricated operation possible (subsequently required for further operation) |
| Corrosion resistance classification CRC | 1 - Low corrosion stress  |
| PWIS conformity                         | VDMA24364-B1/B2-L   |
| Medium temperature                      | -10 ... 60 °C   |
| Ambient temperature                     | -10 ... 60 °C   |
| Actuation torque                        | 0.6 Nm  |
| Max. force on actuator                  | 200 N   |
| Max. transverse force on actuator       | 200 N   |
| Product weight                          | 298 g   |
| Mounting type                           | Front panel installation<br>with through hole<br>Optional                   |
| Pneumatic connection, port 1            | G1/4  |
| Pneumatic connection, port 2            | G1/4  |
| Pneumatic connection, port 3            | G1/4  |
| Pneumatic connection, port 4            | G1/4  |
| Pneumatic connection, port 5            | G1/4  |
| Materials note                          | Conforms to RoHS  |
| Material cover                          | PA-reinforced   |
| Material seals                          | NBR   |
| Material housing                        | Anodised wrought aluminium alloy  |
| Material lever                          | PA-reinforced   |