

hand slide valve

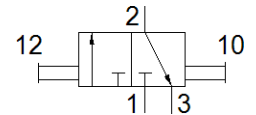
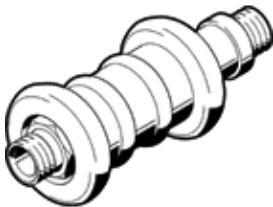
W-3-3/4

Part number: 4052
Product to be discontinued

FESTO

Normally closed.

Type to be discontinued. Available until 2018. See Support Portal for alternative products.



Data sheet

Feature	Value
Valve function	3/2 bistable
Pneumatic connection, port 1	G3/4
Pneumatic connection, port 2	G3/4
Type of actuation	manual
Mounting type	Line installation Threaded
Standard nominal flow rate	6,800 l/min
Nominal size	18 mm
Operating pressure	-0.95 ... 10 bar
Ambient temperature	-10 ... 60 °C
Materials information, housing	Brass
Operating medium	Compressed air in accordance with ISO8573-1:2010 [7:4:4]
Sealing principle	soft
Assembly position	Any
Design structure	Sleeve slide
Type of piloting	direct
Flow direction	reversible
Note on operating and pilot medium	Lubricated operation possible (subsequently required for further operation)
Medium temperature	-10 ... 60 °C
Actuating force	30 N
Product weight	400 g
Materials information for screw-in stud	Wrought Aluminium alloy Anodised
Materials note	Conforms to RoHS
Materials information for seals	NBR