

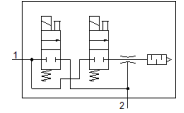
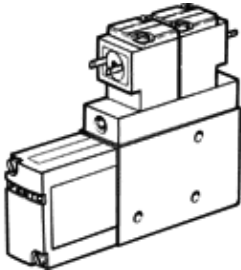
vacuum generator

VAD-ME-I-1/4

Part number: 35532
 Classic - do not use for new projects



With integrated solenoid valve for vacuum On/Off and ejector pulse
 Unlubricated air is recommended.
 Modern alternatives can be found by entering the first four characters
 of the type code in the search field.



Data sheet

Feature	Value
Nominal size, Laval nozzle	1.4 mm
Assembly position	Any
Ejector characteristic	High vacuum
Integrated function	Ejector pulse valve, electrical Electrical on-off valve
Design structure	T-shaped
Operating pressure	1.5 ... 8 bar
Max. vacuum	90 %
Duty cycle	100 %
Operating medium	Compressed air in accordance with ISO8573-1:2010 [7:4:4]
Note on operating and pilot medium	Lubricated operation not possible
PWIS conformity	VDMA24364-B2-L
Medium temperature	0 ... 50 °C
Protection class	IP65
Ambient temperature	0 ... 50 °C
Electrical connection	Plug
Mounting type	with internal (female) thread
Pneumatic connection, port 1	G1/8
Vacuum connection	G1/4
Material housing	Aluminium