

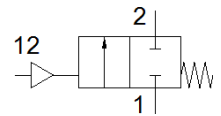
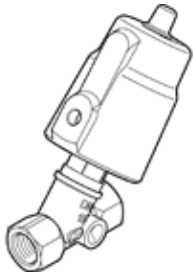
angle seat valve

VZXF-L-M22C-M-A-G12-120-H3B1-50-16-EX4

Part number: 3539021

FESTO

Pneumatically actuated angle seat valve in red brass. Over seat version, safety position closed, G thread, ATEX, nominal width 1/2".



Data sheet

| Feature | Value |
|---|---|
| Design structure | Poppet valve with piston actuator |
| Type of actuation | pneumatic |
| Sealing principle | soft |
| Assembly position | Any |
| Mounting type | Line installation |
| Line connection | G1/2 threaded collar to DIN ISO 228 |
| Nominal size | 12 mm |
| Valve function | 2/2 closed, monostable |
| Flow direction | non reversible |
| Medium pressure | 0 ... 16 bar |
| Nominal pressure of process valve | 16 |
| Exhaust-air function | not throttleable |
| Type of reset | mechanical spring |
| Type of piloting | With external control |
| Pneumatic connection | Female thread G1/8 |
| Operating pressure | 6 ... 10 bar |
| Medium | Vapour Inert gases Filtered compressed air, degree of filtration 200 µm |
| Flow direction | Above valve seat, for gaseous media |
| Operating medium | Compressed air in accordance with ISO8573-1:2010 [7:4:4] |
| Max. viscosity | 600 mm ² /s |
| Medium temperature | -10 ... 80 °C |
| Ambient temperature | -10 ... 60 °C |
| Flow rate Kv | 3.5 m ³ /h |
| Materials note | Contains PWIS substances Conforms to RoHS |
| Material process valve housing | Gunmetal (red brass) |
| Material number, process valve housing | CC499K |
| Material spindle seal | NBR |
| Material seat seal | PTFE |
| Product weight | 1,200 g |
| CE mark (see declaration of conformity) | to EU directive explosion protection (ATEX) |
| ATEX category Gas | II 2G |
| ATEX category Dust | II 2D |
| Explosion ignition protection type Gas | Ex h IIC T6...T3 Gb X |
| Explosion ignition protection type Dust | Ex h IIIC T80°C...T200°C Db X |
| Explosion-proof ambient temperature | -10°C ≤ Ta ≤ +60°C |
| Corrosion resistance classification CRC | 1 - Low corrosion stress |
| Material drive housing | Brass |