

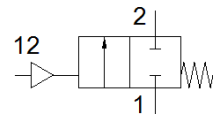
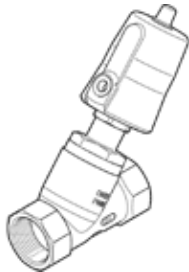
angle seat valve

VZXF-L-M22C-M-A-G114-310-V4B2V-50-V

Part number: 3536686

FESTO

Pneumatically actuated angle seat valve in stainless steel. Over seat version, safety position closed, G thread, vacuum, nominal width 1 1/4".



Data sheet

| Feature | Value |
|---|---|
| Design structure | Poppet valve with piston actuator |
| Type of actuation | pneumatic |
| Sealing principle | soft |
| Assembly position | Any |
| Mounting type | Line installation |
| Line connection | G1¼ threaded collar to DIN ISO 228 |
| Nominal size | 31 mm |
| Valve function | 2/2 closed, monostable |
| Flow direction | non reversible |
| Pressure of medium | -0.09 ... 0 MPa |
| Medium pressure | -0.9 ... 0 bar |
| Nominal pressure of process valve | 40 |
| Exhaust-air function | not throttleable |
| Type of reset | mechanical spring |
| Type of piloting | With external control |
| Pneumatic connection | Female thread G1/8 |
| Operating pressure MPa | 0.6 ... 1 MPa |
| Operating pressure | 6 ... 10 bar 87 ... 145 psi |
| Medium | Vapour Inert gases Filtered compressed air, degree of filtration 200 µm |
| Flow direction | Above valve seat, for gaseous media |
| Operating medium | Compressed air in accordance with ISO8573-1:2010 [7:4:4] |
| Max. viscosity | 600 mm ² /s |
| Medium temperature | -10 ... 80 °C |
| Ambient temperature | -10 ... 60 °C |
| Flow rate Kv | 18.5 m ³ /h |
| Materials note | Conforms to RoHS |
| PWIS conformity | VDMA24364 zone III |
| Material process valve housing | Stainless steel casting |
| Material number, process valve housing | 1.4408 |
| Material spindle seal | FPM |
| Material seat seal | FPM |
| Product weight | 2,200 g |
| Corrosion resistance classification CRC | 2 - Moderate corrosion stress |
| Material drive housing | Nickel-plated brass |