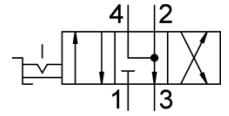
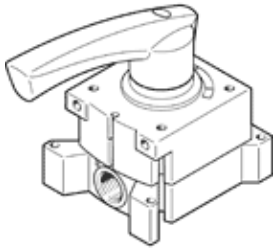


# hand lever valve VHER-H-B43E-G14

Part number: 3515082

FESTO



## Data sheet

| Feature                                 | Value   |
|---|---|
| Valve function                          | 4/3 exhausted   |
| Type of actuation                       | manual  |
| Width                                   | 66 mm   |
| Standard nominal flow rate              | 1,150 l/min   |
| Operating pressure                      | 0 ... 10 bar  |
| Note on operating pressure              | Vacuum operation at port 3 only<br>In the case of dual-pressure operation, the pressure at port 1 must be higher than at port 3 |
| Design structure                        | Rotary slide valve  |
| Nominal size                            | 8 mm  |
| Exhaust-air function                    | throttleable  |
| Instructions for use                    | Actuate only manually   |
| Sealing principle                       | Hard  |
| Type of piloting                        | direct  |
| Flow direction                          | non reversible  |
| Freedom from overlap                    | Yes   |
| Switching position indicator            | with accessories  |
| Operating medium                        | Compressed air in accordance with ISO8573-1:2010 [7:4:4]  |
| Note on operating and pilot medium      | Lubricated operation possible (subsequently required for further operation)   |
| Corrosion resistance classification CRC | 2 - Moderate corrosion stress   |
| PWIS conformity                         | VDMA24364-B1/B2-L   |
| Medium temperature                      | -20 ... 80 °C   |
| Ambient temperature                     | -20 ... 80 °C   |
| Actuation torque                        | 2 Nm  |
| Product weight                          | 560 g   |
| Mounting type                           | Front panel installation<br>with through hole<br>Optional   |
| Pneumatic connection, port 1            | G1/4  |
| Pneumatic connection, port 2            | G1/4  |
| Pneumatic connection, port 3            | G1/4  |
| Pneumatic connection, port 4            | G1/4  |
| Materials note                          | Conforms to RoHS  |
| Material seals                          | NBR   |
| Material housing                        | Aluminium die cast  |
| Material lever                          | Aluminium die cast  |