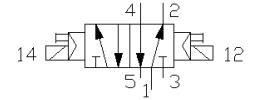
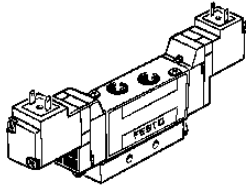


Double JMEH-5/2-1/8

Part number: 34756

FESTO



Datasheet

Feature	Value
A1 Switching function symbol	S5A
A2 Switching function short code	5/2
A2B Direction of flow reversible	nein
A3 Operational principle	Schieber
A3A Form operating component	Kolben
A5 Non-overlapping	ja
A6 Type of control	indirekt
A7 Type of setting	bistabil
B5 Type of mounting	Schraub
B6 Number mounting options	-
C Nominal size	4 mm
D1 Operating pressure min.	1,5 bar
D2 Operating pressure max.	8 bar
D3 Minimum ambient temperature	-5 Cel
D4 Maximum ambient temperature	50 Cel
D5 Minimum temperature of medium	-5 Cel
D6 Maximum temperature of medium	50 Cel
E1A Connection type power ports	Gewinde
E1B Working port ducted exhaust	ja
E1C Connection type pilot pressure ventil.	Intern
E1D Connection type pilot pressure exhaust	Gewinde
E22 Thread type (working port)	G
E26 Thread diameter (inch)	1/8 Zoll
E62 Thread type (pilot air exhaust)	M
E63 Thread diameter (metr.)	5 mm
G1 Actuation/Reset	E08:E08
G2 Manual override	stoss-rück
G3 Operating status display	nein
J3 LABS criterion	frei
K1A Normal nominal flow 1 - 2	500 l/min
L3 Switching time OFF/UM according to FN	10 ms
N Magnetic system (sizing)	E
P1 Type of voltage	../DC

Feature	Value
P2A Nominal direct current	24 V
P3A Rating (DC)	1,5 W
R2 Medium of operation	L33:L53
R3 Medium of control	L33:L53
S Protection class	-