

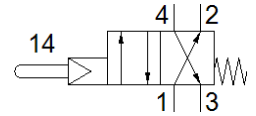
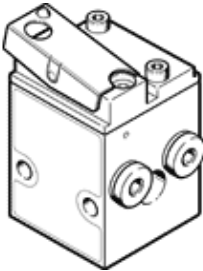
stem actuated valve

VS-4-1/8

Part number: 3394

FESTO

Piloted, normally closed.



Data sheet

Feature	Value
Valve function	4/2 monostable
Type of actuation	mechanical
Standard nominal flow rate	140 ... 147 l/min
Operating pressure MPa	0.35 ... 0.8 MPa
Operating pressure	3.5 ... 8 bar
Design structure	Poppet seat
Type of reset	mechanical spring
Nominal size	3.5 mm
Exhaust-air function	throttleable
Sealing principle	soft
Assembly position	Any
Type of piloting	Piloted
Pilot air supply	Internal
Flow direction	non reversible
Pilot medium	Compressed air in accordance with ISO8573-1:2010 [-:-:-]
Note on forced dynamisation	Switching frequency min. 1/year
Operating medium	Compressed air in accordance with ISO8573-1:2010 [-:-:-]
Note on operating and pilot medium	Lubricated operation possible (subsequently required for further operation)
Corrosion resistance classification CRC	2 - Moderate corrosion stress
PWIS conformity	VDMA24364-B1/B2-L
Medium temperature	-10 ... 60 °C
Ambient temperature	-10 ... 60 °C
Actuating force	3.2 N
Product weight	220 g
Mounting type	with through hole
Pneumatic connection, port 1	G1/8
Pneumatic connection, port 2	G1/8
Pneumatic connection, port 3	G1/8
Pneumatic connection, port 4	G1/8
Materials note	Conforms to RoHS
Material seals	NBR
Material housing	Aluminium Anodised