

# semi-rotary drive DSR-3/8"-180-P

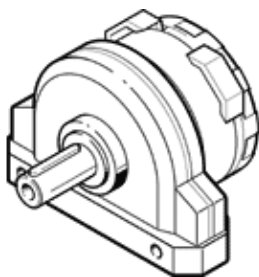
Part number: 33155  
Classic - do not use for new projects

FESTO

Rotary vane principle, infinitely adjustable swivel angle. The stop system is separate from the rotary vane so that any forces which occur are absorbed by the stop cams and cushioned via flexible plastic pads.

Modern alternatives can be found by entering the first four characters of the type code in the search field.

Type to be discontinued. Available until 2021. See Support Portal for alternative products.



## Data sheet

Feature	Value
Cushioning angle	2.4 deg
Rotation angle adjustment range	0 ... 180 deg
Swivel angle	0 ... 180 deg
Cushioning	P: Flexible cushioning rings/plates at both ends
Mode of operation	double-acting
Operating pressure	2.5 ... 8 bar
Operating medium	Compressed air in accordance with ISO8573-1:2010 [7:-:]
Ambient temperature	-10 ... 60 °C
Theoretical torque at 6 bar	0.5 Nm
Pneumatic connection	M3