

pneumatic valve

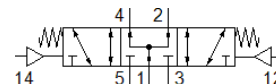
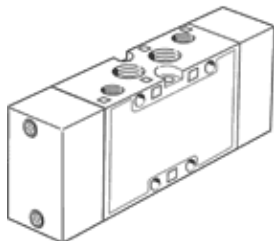
VL-5/3B-1/8-B

Part number: 31310
Classic - do not use for new projects

FESTO

5/3-way function, centre position pressurised

Modern alternatives can be found by entering the first four characters of the type code in the search field.



Data sheet

| Feature | Value |
|---|---|
| Valve function | 5/3 pressurised |
| Type of actuation | pneumatic |
| Width | 26 mm |
| Standard nominal flow rate | 1,000 l/min |
| Operating pressure MPa | -0.09 ... 1 MPa |
| Operating pressure | -0.9 ... 10 bar |
| Design structure | Piston slide |
| Type of reset | mechanical spring |
| Nominal size | 8 mm |
| Grid dimension | 27 mm |
| Exhaust-air function | throttleable |
| Sealing principle | soft |
| Assembly position | Any |
| Manual override | None |
| Type of piloting | direct |
| Pilot air supply | external |
| Flow direction | reversible |
| Overlap | Positive overlap |
| Pilot pressure MPa | 0.3 ... 1 MPa |
| Pilot pressure | 3 ... 10 bar |
| Max. switching frequency | 3 Hz |
| Switching time off | 14 ms |
| Switching time on | 5 ms |
| Switching time reversal | 16 ms |
| Operating medium | Compressed air in accordance with ISO8573-1:2010 [7:4:4] |
| Note on operating and pilot medium | Lubricated operation possible (subsequently required for further operation) |
| Corrosion resistance classification CRC | 1 - Low corrosion stress |
| PWIS conformity | VDMA24364-B1/B2-L |
| Storage temperature | -40 ... 60 °C |
| Medium temperature | -10 ... 60 °C |
| Pilot medium | Compressed air in accordance with ISO8573-1:2010 [7:4:4] |
| Ambient temperature | -10 ... 60 °C |
| Product weight | 320 g |
| Mounting type | On PR manifold with through hole Optional |
| Pilot exhaust port 82 | M5 |
| Pilot air port 12 | G1/8 |
| Pilot air port 14 | G1/8 |
| Pneumatic connection, port 1 | G1/8 |
| Pneumatic connection, port 2 | G1/8 |

| Feature | Value |
|------------------------------|--------------------|
| Pneumatic connection, port 3 | G1/8 |
| Pneumatic connection, port 4 | G1/8 |
| Pneumatic connection, port 5 | G1/8 |
| Materials note | Conforms to RoHS |
| Material seals | NBR |
| Material housing | Aluminium die cast |