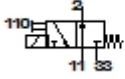


MOEH-3-1/8-LCN

Solenoid valve

Feature	Data/description
Nominal size	0,9 mm
Type of actuation	electrical
Sealing principle	soft
Assembly position	Any
Manual override	None
Design structure	Poppet seat
Type of reset	mechanical spring
Type of piloting	direct
Flow direction	non reversible
Valve function	3/2 monostable
Standard nominal flow rate	22 l/min
Switching time off	16 ms
Switching time on	10 ms
Operating pressure	-0,9 - 8 bar
Characteristic coil data	24V DC: 1,5W
Operating medium	Filtered, unlubricated compressed air, 50 µm filtration Filtered, lubricated compressed air, 40 µm filtration
Medium temperature	-5 - 50 °C
Protection class	IP65
Pilot medium	Filtered, unlubricated compressed air, 50 µm filtration Filtered, lubricated compressed air, 40 µm filtration
Ambient temperature	-5 - 50 °C
Mounting type	with through hole



MOEH-3-1/8-LCN

Solenoid valve

Feature	Data/description
Pneumatic connection, port 1	G1/8
Pneumatic connection, port 2	G1/8
Pneumatic connection, port 3	G1/8